

Johnson County, Iowa
 Iowa South Zone (1402)
 Horiz. Datum: **NAD83(NA2011)**
 Vert. Datum: NAVD 1988
 US Survey Feet
2013

Point Name: **225**

Designation: 2006-225 City of North Liberty GPS Control (Set by DCI in 2006)

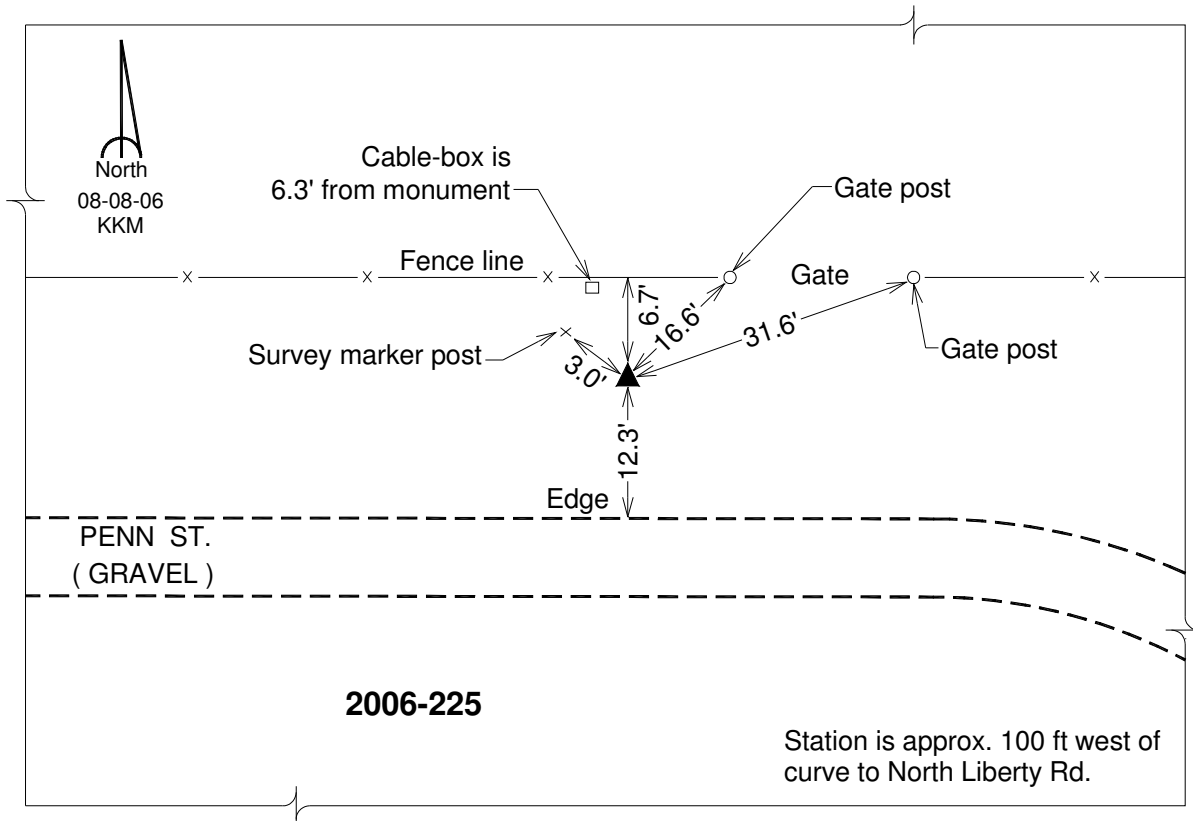
Northing: **644109.61sft** Easting: **2164818.31sft**

Orthometric Height: **840.85sft** Ellipsoid Height: **734.02sft** **Geoid12A**

Latitude: **N41°45'07.07729"** Longitude: **W91°34'40.98342"**

Mapping Angle: **1°15'58"** Combination Scale Factor: **0.999959557**

Monument Type: Berntsen Top Security Rod Monument with a 2-1/2" dia. domed survey cap and permanent magnet encased in a 6" dia. PVC pipe with a NGS style aluminum access cover.



This document was prepared by DCI on 03-05-2013 for use by Johnson County, Iowa.