

Johnson County, Iowa
Iowa South Zone (1402)
Horiz. Datum: **NAD83(NA2011)**
Vert. Datum: NAVD 1988
US Survey Feet
2013

Point Name: **227**

Designation: 2006-227 City of Coralville GPS Control Pt (Set by DCI in 2006)

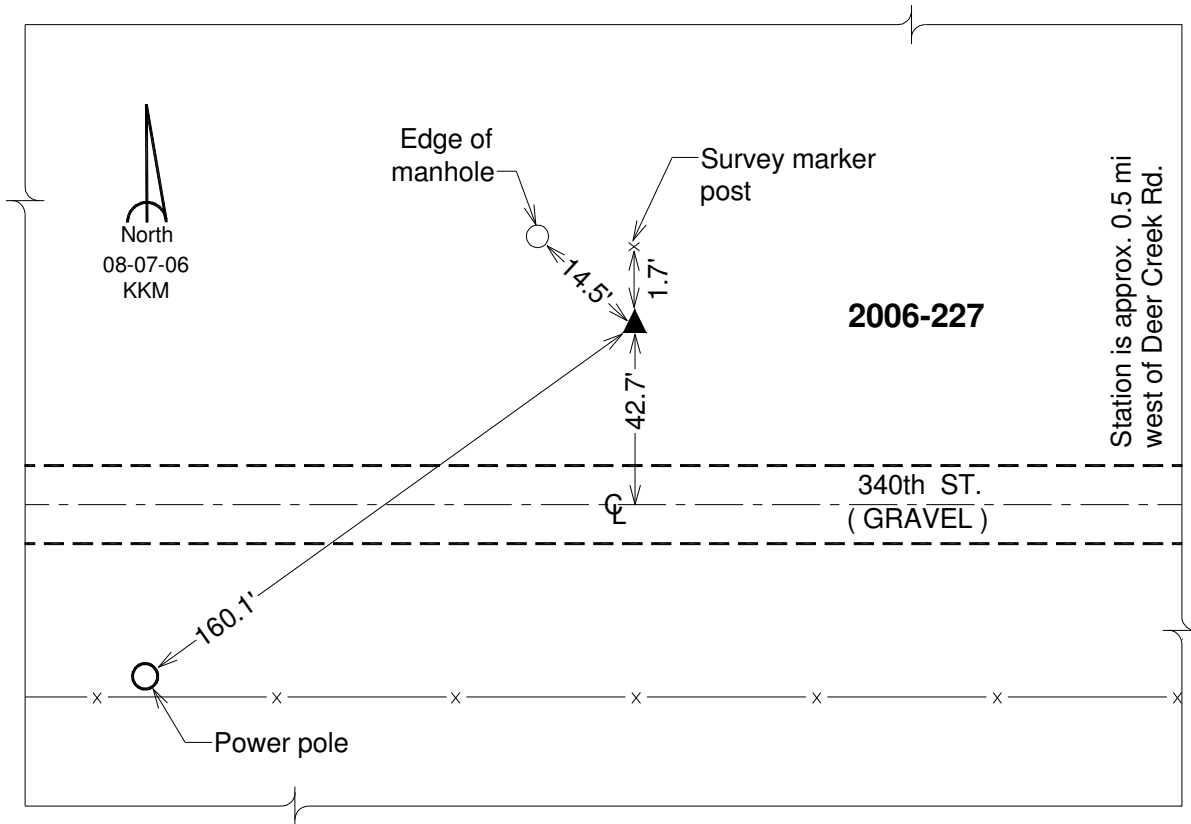
Northing: **621741.73sft** Easting: **2152018.07sft**

Orthometric Height: **678.73sft** Ellipsoid Height: **571.84sft** **Geoid12A**

Latitude: **N41°41'28.90533"** Longitude: **W91°37'36.17335"**

Mapping Angle: **1°14'02"** Combination Scale Factor: **0.999957678**

Monument Type: Berntsen Top Security Rod Monument with a 2-1/2" dia. domed survey cap and permanent magnet encased in a 6" dia. PVC pipe with a NGS style aluminum access cover.



This document was prepared by DCI on 03-05-2013 for use by Johnson County, Iowa.