

**Johnson County, Iowa**  
Iowa South Zone (1402)  
Horiz. Datum: **NAD83(NA2011)**  
Vert. Datum: NAVD 1988  
US Survey Feet  
**2013**

**WARNING**  
Elevation may not be correct.  
May 2013  
by Johnson Co. Engineer's Office

Point Name: **233**

**Designation:** 2006-233 City of Iowa City GPS Control Pt (Set by DCI in 2006)

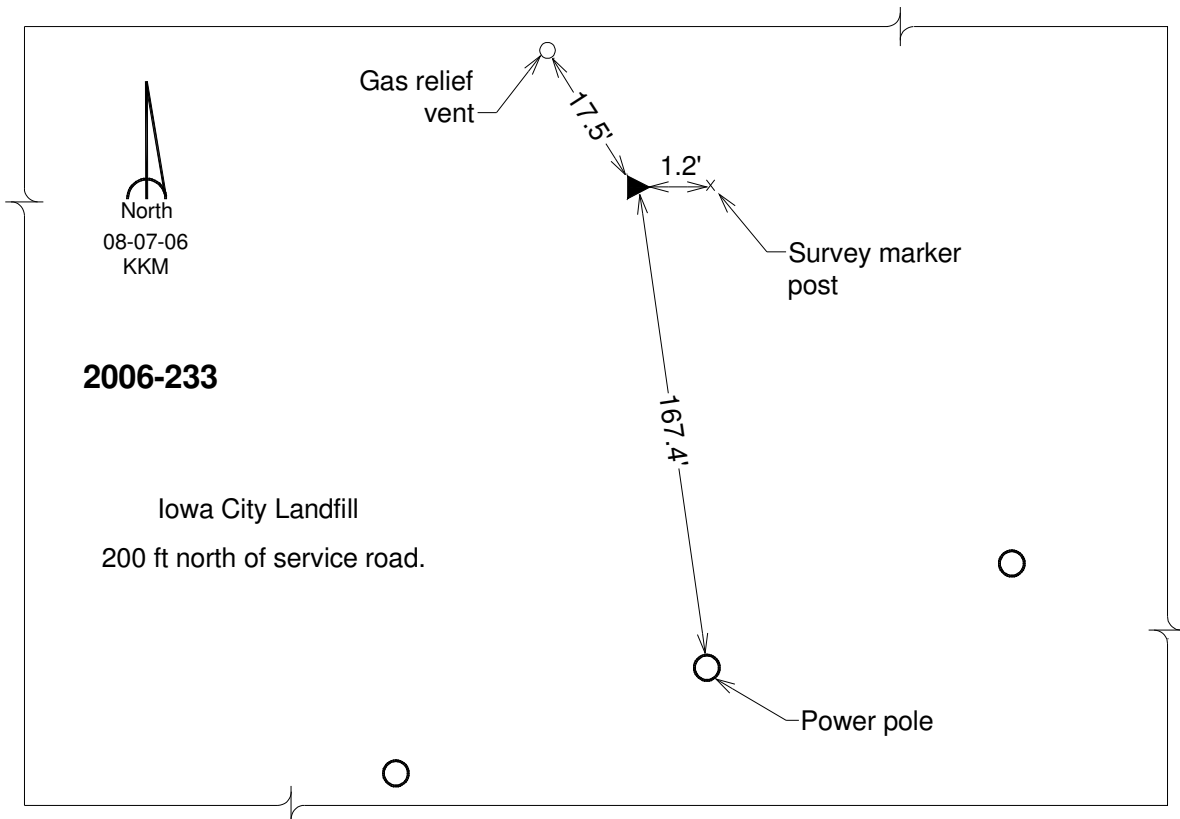
Northing: **606706.34sft** Easting: **2152457.31sft**

Orthometric Height: **780.50sft** Ellipsoid Height: **673.55sft** **Geoid12A**

Latitude: **N41°39'00.30198"** Longitude: **W91°37'34.65373"**

Mapping Angle: **1°14'03"** Combination Scale Factor: **0.999946919**

**Monument Type:** Berntsen Top Security Rod Monument with a 2-1/2" dia. domed survey cap and permanent magnet encased in a 6" dia. PVC pipe with a NGS style aluminum access cover.



*This document was prepared by DCI on 03-05-2013 for use by Johnson County, Iowa.*