

Johnson County, Iowa
 Iowa South Zone (1402)
 Horiz. Datum: **NAD83(NA2011)**
 Vert. Datum: NAVD 1988
 US Survey Feet
2013

Point Name: **235**

Designation: 2006-235 City of Iowa City GPS Control Pt (Set by DCI in 2006)

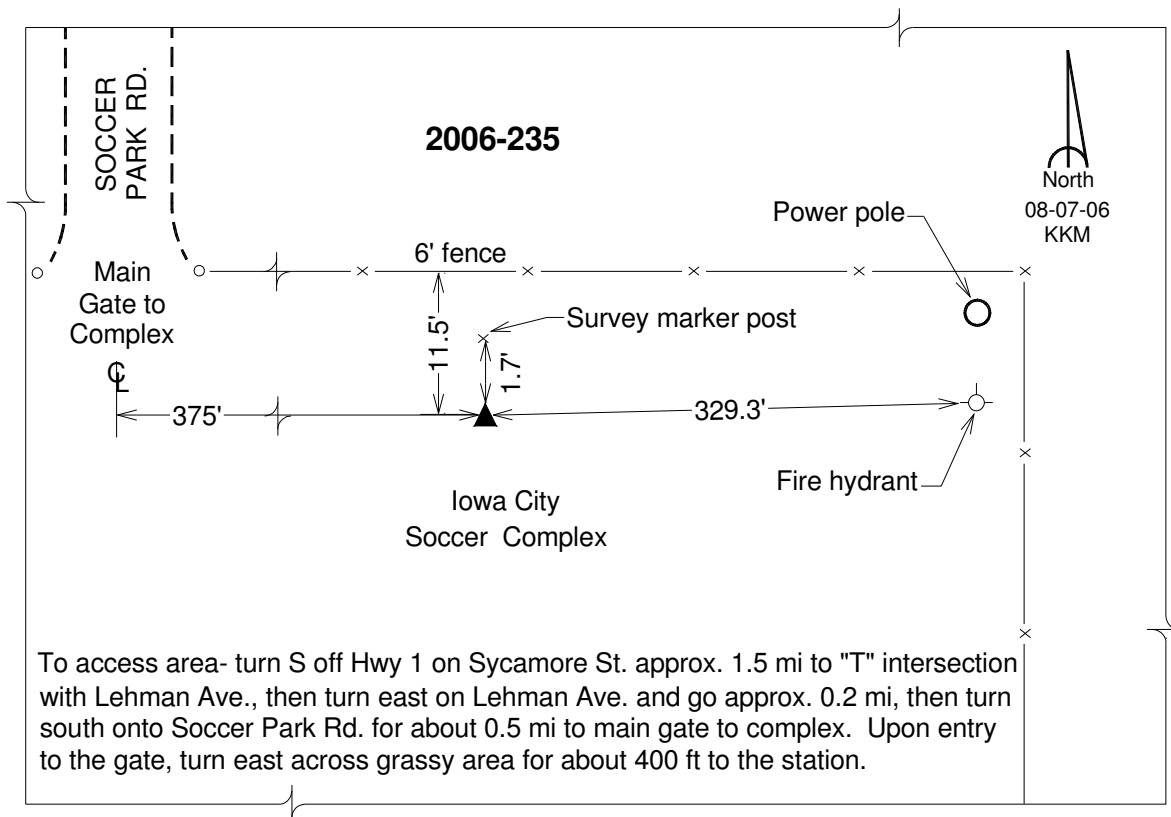
Northing: **593953.25sft** Easting: **2185002.62sft**

Orthometric Height: **678.92sft** Ellipsoid Height: **571.78sft** **Geoid12A**

Latitude: **N41°36'47.19159"** Longitude: **W91°30'29.91112"**

Mapping Angle: **1°18'43"** Combination Scale Factor: **0.999946925**

Monument Type: Berntsen Top Security Rod Monument with a 2-1/2" dia. domed survey cap and permanent magnet encased in a 6" dia. PVC pipe with a NGS style aluminum access cover.



This document was prepared by DCI on 03-05-2013 for use by Johnson County, Iowa.