

Johnson County, Iowa
Iowa South Zone (1402)
Horiz. Datum: **NAD83(NA2011)**
Vert. Datum: NAVD 1988
US Survey Feet
2013

Point Name: **236**

Designation: 2006-236 City of Iowa City GPS Control Pt (Set by DCI in 2006)

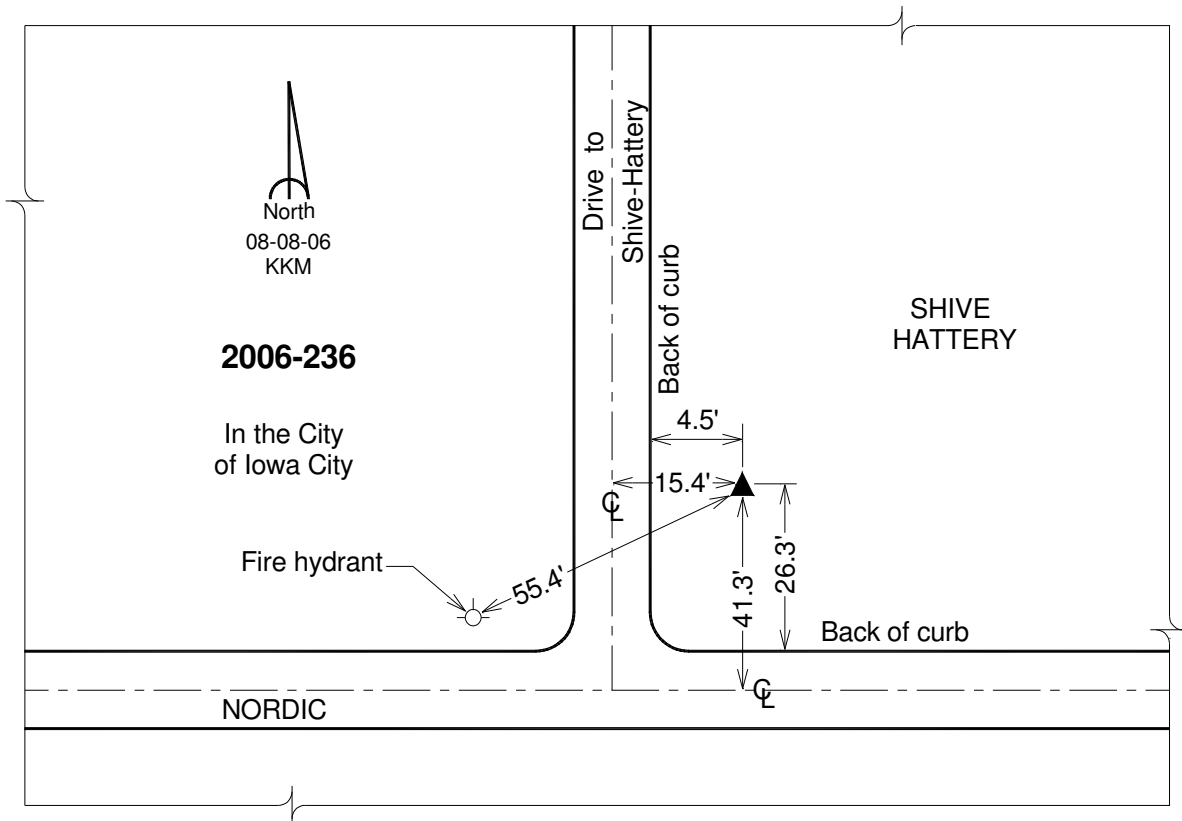
Northing: **621441.44sft** Easting: **2188836.58sft**

Orthometric Height: **729.61sft** Ellipsoid Height: **622.60sft** **Geoid12A**

Latitude: **N41°41'17.82439"** Longitude: **W91°29'31.09709"**

Mapping Angle: **1°19'22"** Combination Scale Factor: **0.999954798**

Monument Type: Berntsen Top Security Rod Monument with a 2-1/2" dia. domed survey cap and permanent magnet encased in a 6" dia. PVC pipe with a NGS style aluminum access cover.



This document was prepared by DCI on 03-05-2013 for use by Johnson County, Iowa.