

Kossuth County, Iowa
Iowa North Zone (1401)
Horiz. Datum: NAD83(1996)
Vert. Datum: NAVD 1988
US Survey Feet
2005

Point Name: **1**

Designation: G158 Winnebago Co GPS Control Monument (Set by WHKS in 2002)

Northing: **4009983.40sft** Easting: **4796480.59sft**

Orthometric Height: **1136.48sft** Ellipsoid Height: **1042.52sft** **Geoid03**

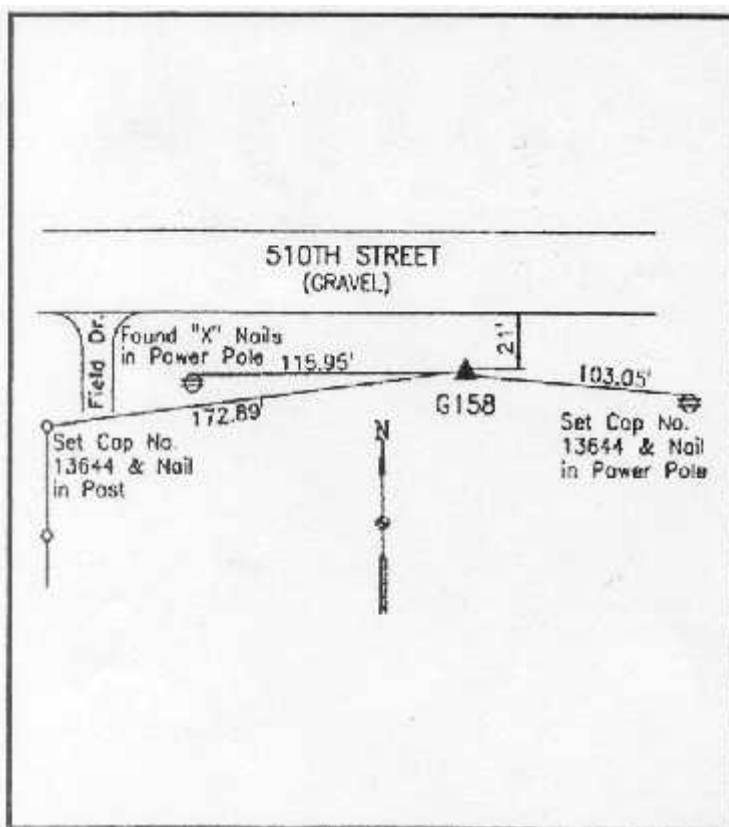
Latitude: **43°29'59.14408"N**

Longitude: **93°58'12.70612"W**

Mapping Angle: **-0°19'07"**

Combination Scale Factor: **1.000001190**

Monument Type: 5/8" x 6'-0" long aluminum rod with stamped cap and NGS style access cover.



Description:

Placed 5/8" X 6' - 0" Long Aluminum Rod with Cap Stamped G158 and NGS Style Access Cover 3" Deep.

Location:

On south side 510th Street - 150'± east of Section line fence - near NW Corner Section 7-T100N-R26W.

This document was prepared by DCI and GBC for use by Kossuth County, Iowa.