

Kossuth County, Iowa
Iowa North Zone (1401)
Horiz. Datum: NAD83(1996)
Vert. Datum: NAVD 1988
US Survey Feet
2005

Point Name: **2**

Designation: G141 Winnebago Co GPS Control Monument (Set by WHKS in 2002)

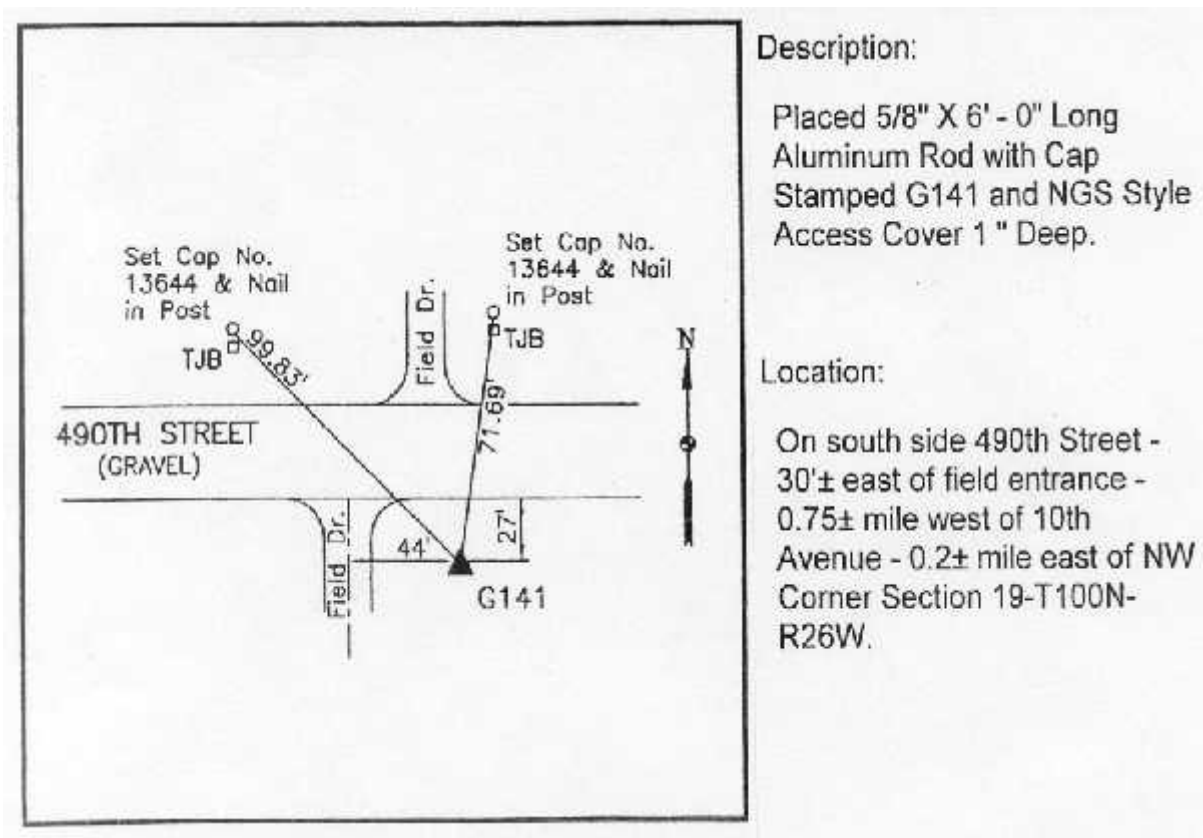
Northing: **4000214.98**sft Easting: **4797299.23**sft

Orthometric Height: **1140.91**sft Ellipsoid Height: **1046.75**sft **Geoid03**

Latitude: **43°28'22.71882"N** Longitude: **93°58'00.86819"W**

Mapping Angle: **-0°18'59"** Combination Scale Factor: **0.999994290**

Monument Type: 5/8" x 6'-0" long aluminum rod with stamped cap and NGS style access cover.



Description:

Placed 5/8" X 6' - 0" Long
Aluminum Rod with Cap
Stamped G141 and NGS Style
Access Cover 1" Deep.

Location:

On south side 490th Street -
30'± east of field entrance -
0.75± mile west of 10th
Avenue - 0.2± mile east of NW
Corner Section 19-T100N-
R26W.

This document was prepared by DCI and GBC for use by Kossuth County, Iowa.