

**Kossuth County, Iowa**  
Iowa North Zone (1401)  
Horiz. Datum: NAD83(1996)  
Vert. Datum: NAVD 1988  
US Survey Feet  
**2005**

Point Name: **3**

**Designation:** G140 Winnebago Co GPS Control Monument (Set by WHKS in 2002)

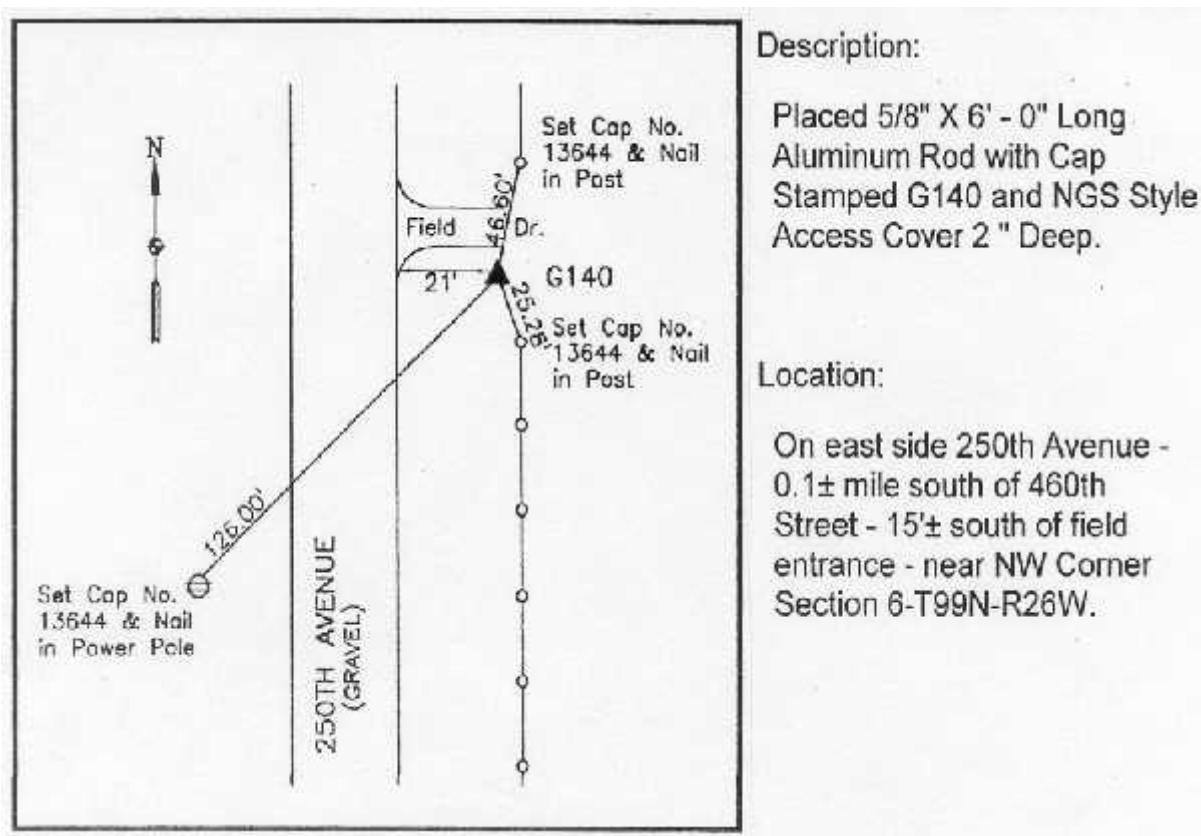
Northing: **3983918.10**sft Easting: **4796279.05**sft

Orthometric Height: **1178.24**sft Ellipsoid Height: **1083.93**sft **Geoid03**

Latitude: **43°25'41.71730"N** Longitude: **93°58'13.47263"W**

Mapping Angle: **-0°19'08"** Combination Scale Factor: **0.999981810**

**Monument Type:** 5/8" x 6'-0" long aluminum rod with stamped cap and NGS style access cover.



*This document was prepared by DCI and GBC for use by Kossuth County, Iowa.*