

**Kossuth County, Iowa**  
Iowa North Zone (1401)  
Horiz. Datum: NAD83(1996)  
Vert. Datum: NAVD 1988  
US Survey Feet  
**2005**

Point Name: **5**

**Designation:** G105 Winnebago Co GPS Control Monument (Set by WHKS in 2002)

Northing: **3936695.01**sft Easting: **4796364.90**sft

Orthometric Height: **1166.33**sft Ellipsoid Height: **1071.36**sft **Geoid03**

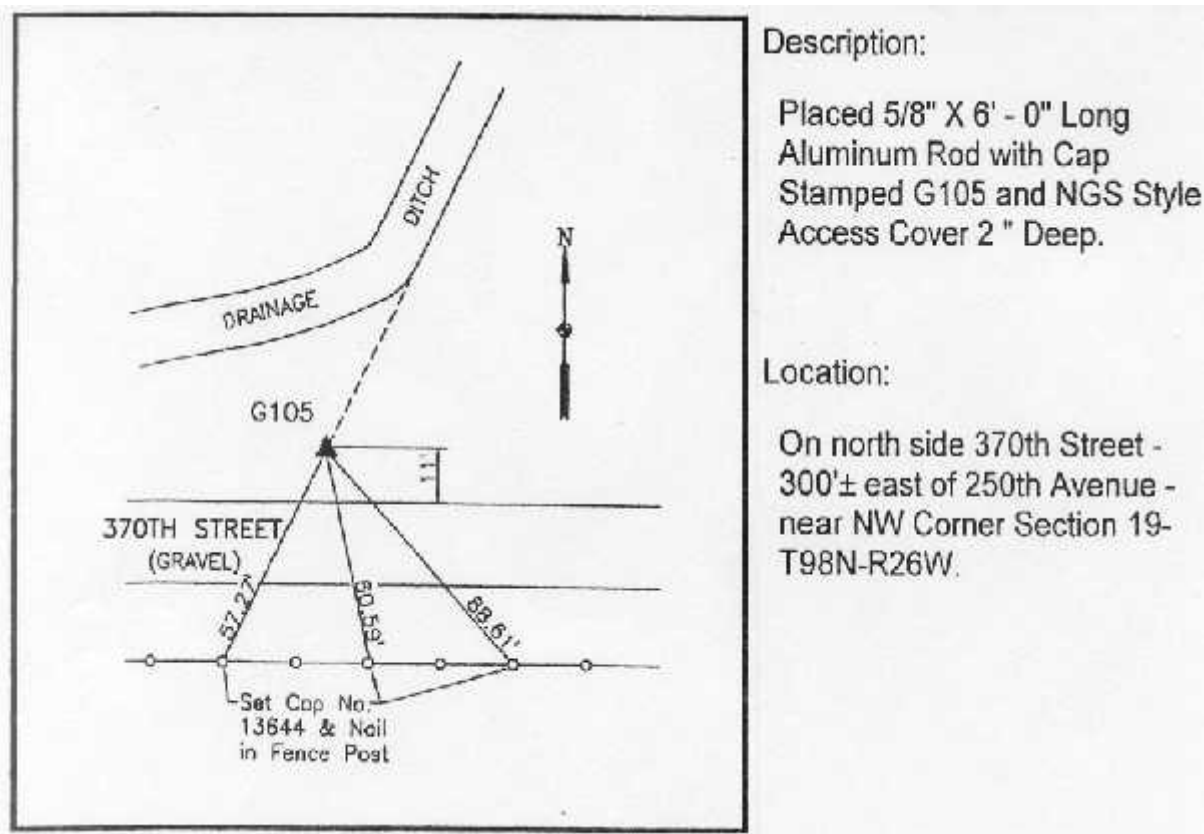
Latitude: **43°17'55.33734"N**

Longitude: **93°58'08.75849"W**

Mapping Angle: **-0°19'05"**

Combination Scale Factor: **0.999954900**

**Monument Type:** 5/8" x 6'-0" long aluminum rod with stamped cap and NGS style access cover.



*This document was prepared by DCI and GBC for use by Kossuth County, Iowa.*