

Kossuth County, Iowa
Iowa North Zone (1401)
Horiz. Datum: NAD83(1996)
Vert. Datum: NAVD 1988
US Survey Feet
2005

Point Name: **418**

Designation: PA-0418 Palo Alto Co GPS Control Point (Set by Palo Alto Co. in 2004)

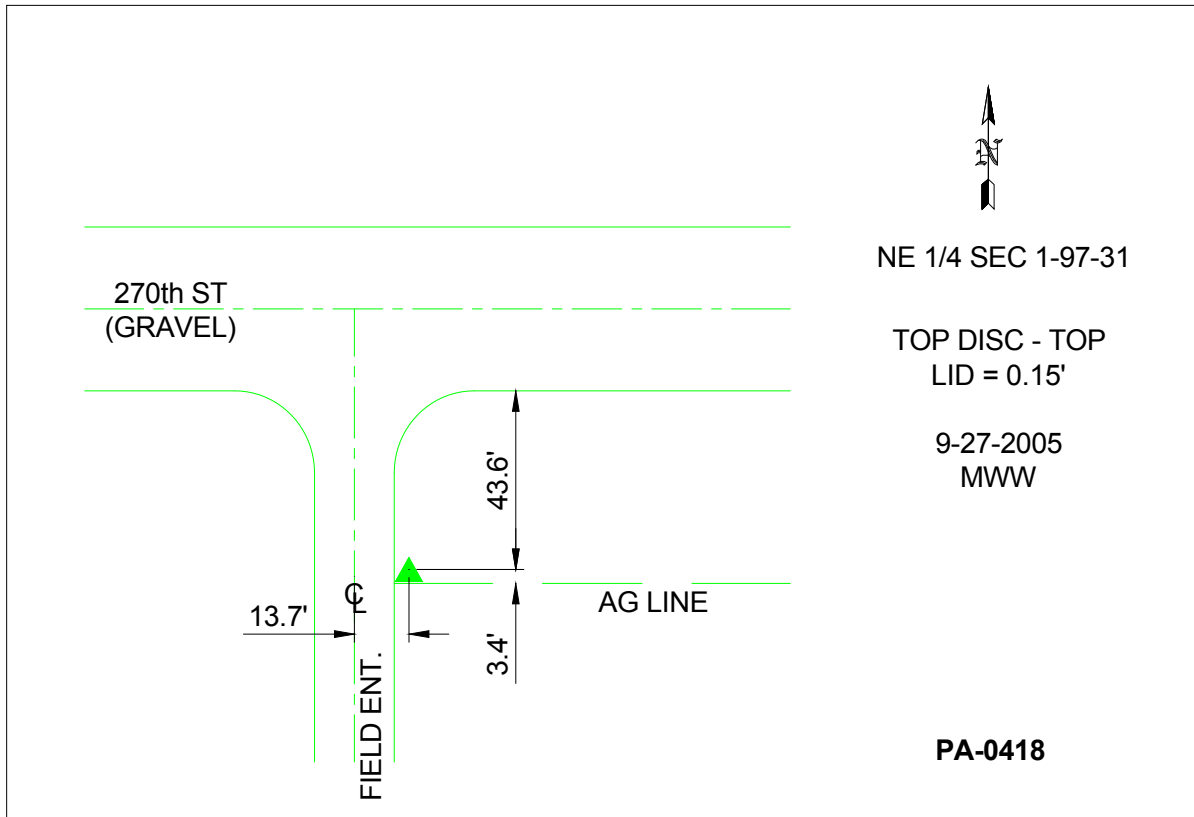
Northing: **3921787.44sft** Easting: **4668834.18sft**

Orthometric Height: **1239.21sft** Ellipsoid Height: **1145.70sft** **Geoid03**

Latitude: **43°15'17.55170"N** Longitude: **94°26'50.92509"W**

Mapping Angle: **-0°38'32"** Combination Scale Factor: **0.999943200**

Monument Type: Berntsen Top Security Rod Monument with a 3-1/4" dia. domed survey cap and permanent magnet encased in a 5"dia. PVC pipe with a NGS style aluminum access cover.



This document was prepared by DCI and GBC for use by Kossuth County, Iowa.