

**Kossuth County, Iowa**  
Iowa North Zone (1401)  
Horiz. Datum: NAD83(1996)  
Vert. Datum: NAVD 1988  
US Survey Feet  
**2005**

Point Name: **438**

**Designation:** PA-0438 Palo Alto Co GPS Control Point (Set by Palo Alto Co. in 2004)

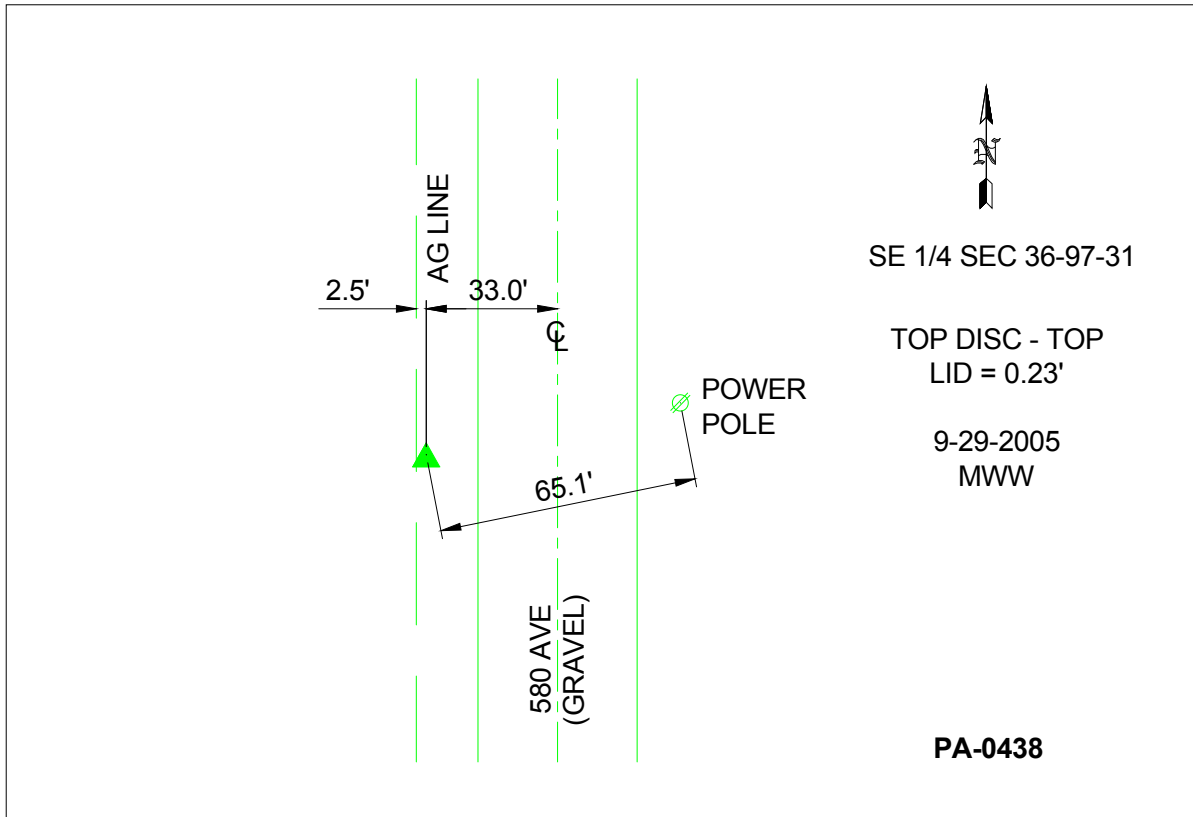
Northing: **3891291.28**sft Easting: **4669722.25**sft

Orthometric Height: **1267.22**sft Ellipsoid Height: **1173.50**sft **Geoid03**

Latitude: **43°10'16.46114"N** Longitude: **94°26'34.32958"W**

Mapping Angle: **-0°38'20"** Combination Scale Factor: **0.999927970**

**Monument Type:** Berntsen Top Security Rod Monument with a 3-1/4" dia. domed survey cap and permanent magnet encased in a 5"dia. PVC pipe with a NGS style aluminum access cover.



*This document was prepared by DCI and GBC for use by Kossuth County, Iowa.*