

**Kossuth County, Iowa**  
Iowa North Zone (1401)  
Horiz. Datum: NAD83(1996)  
Vert. Datum: NAVD 1988  
US Survey Feet  
**2005**

Point Name: **458**

**Designation:** PA-0458 Palo Alto Co GPS Control Point (Set by Palo Alto Co. in 2004)

Northing: **3858935.12sft** Easting: **4669376.53sft**

Orthometric Height: **1218.09sft** Ellipsoid Height: **1124.10sft** **Geoid03**

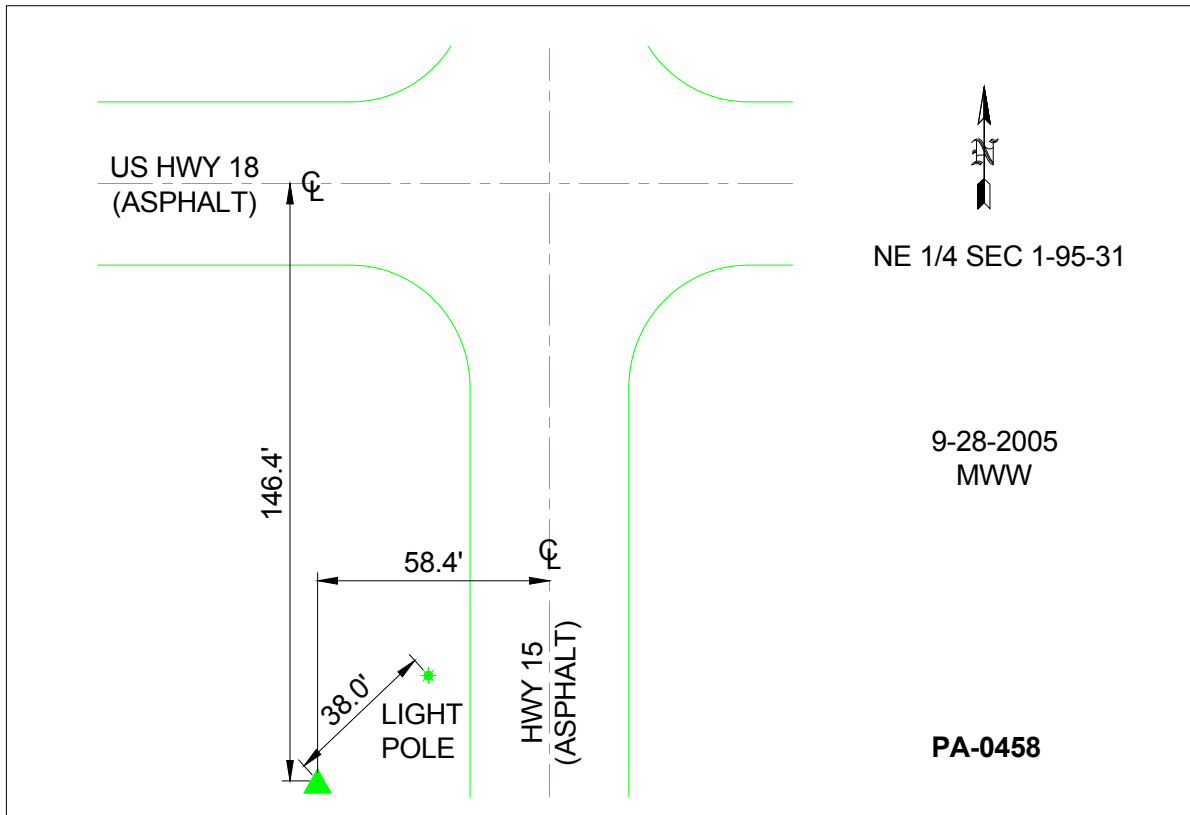
Latitude: **43°04'56.85555"N**

Longitude: **94°26'34.12520"W**

Mapping Angle: **-0°38'20"**

Combination Scale Factor: **0.999917910**

**Monument Type:** Berntsen Top Security Rod Monument with a 3-1/4" dia. domed survey cap and permanent magnet encased in a 5"dia. PVC pipe with a NGS style aluminum access cover.



*This document was prepared by DCI and GBC for use by Kossuth County, Iowa.*