

**Kossuth County, Iowa**  
Iowa North Zone (1401)  
Horiz. Datum: NAD83(1996)  
Vert. Datum: NAVD 1988  
US Survey Feet  
**2005**

Point Name: **488**

**Designation:** PA-0488 Palo Alto Co GPS Control Point (Set by Palo Alto Co. in 2004)

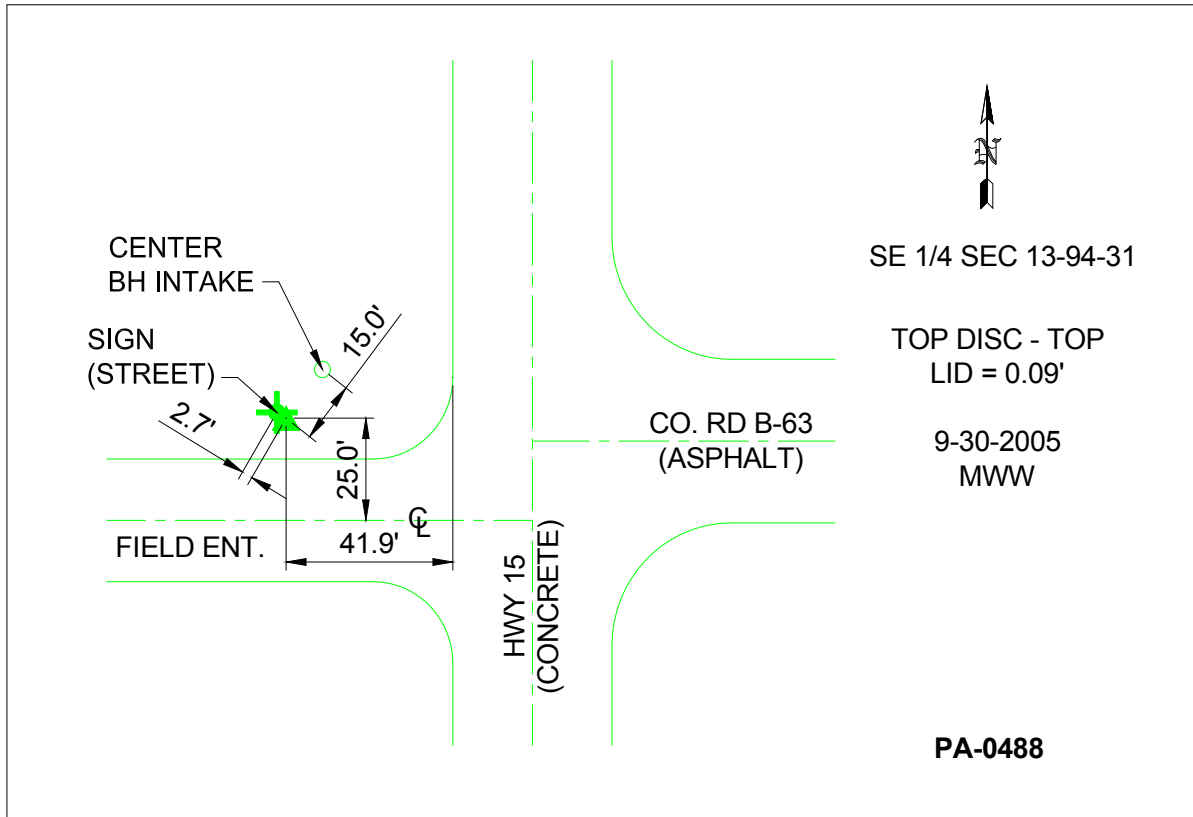
Northing: **3811219.36**sft Easting: **4668721.48**sft

Orthometric Height: **1190.60**sft Ellipsoid Height: **1096.01**sft **Geoid03**

Latitude: **42°57'05.50032"N** Longitude: **94°26'35.77754"W**

Mapping Angle: **-0°38'21"** Combination Scale Factor: **0.999905330**

**Monument Type:** Berntsen Top Security Rod Monument with a 3-1/4" dia. domed survey cap and permanent magnet encased in a 5"dia. PVC pipe with a NGS style aluminum access cover.



*This document was prepared by DCI and GBC for use by Kossuth County, Iowa.*