

**Kossuth County, Iowa**  
 Iowa North Zone (1401)  
 Horiz. Datum: NAD83(1996)  
 Vert. Datum: NAVD 1988  
 US Survey Feet  
**2005**

Point Name: **502**

**Designation:** 2005-502 Kossuth Co GPS Control Point

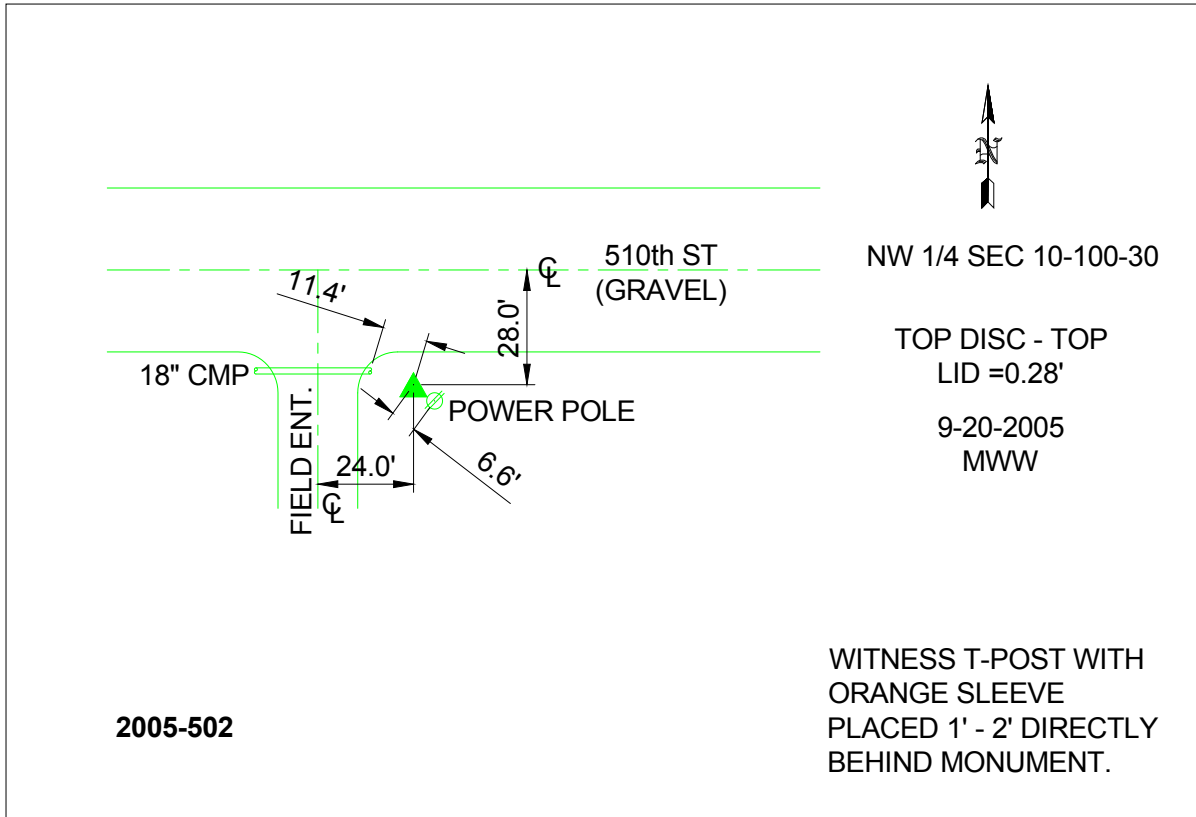
Northing: **4010978.85**sft Easting: **4688764.97**sft

Orthometric Height: **1200.69**sft Ellipsoid Height: **1108.01**sft **Geoid03**

Latitude: **43°30'00.50405"N** Longitude: **94°22'34.10857"W**

Mapping Angle: **-0°35'38"** Combination Scale Factor: **0.999998160**

**Monument Type:** Berntsen Top Security Rod Monument with a 2-1/2" dia. domed survey cap and permanent magnet encased in a 6"dia. PVC pipe with a NGS style aluminum access cover.



*This document was prepared by DCI and GBC for use by Kossuth County, Iowa.*