

**Kossuth County, Iowa**  
Iowa North Zone (1401)  
Horiz. Datum: NAD83(1996)  
Vert. Datum: NAVD 1988  
US Survey Feet  
**2005**

Point Name: **503**

**Designation:** 2005-503 Kossuth Co GPS Control Point

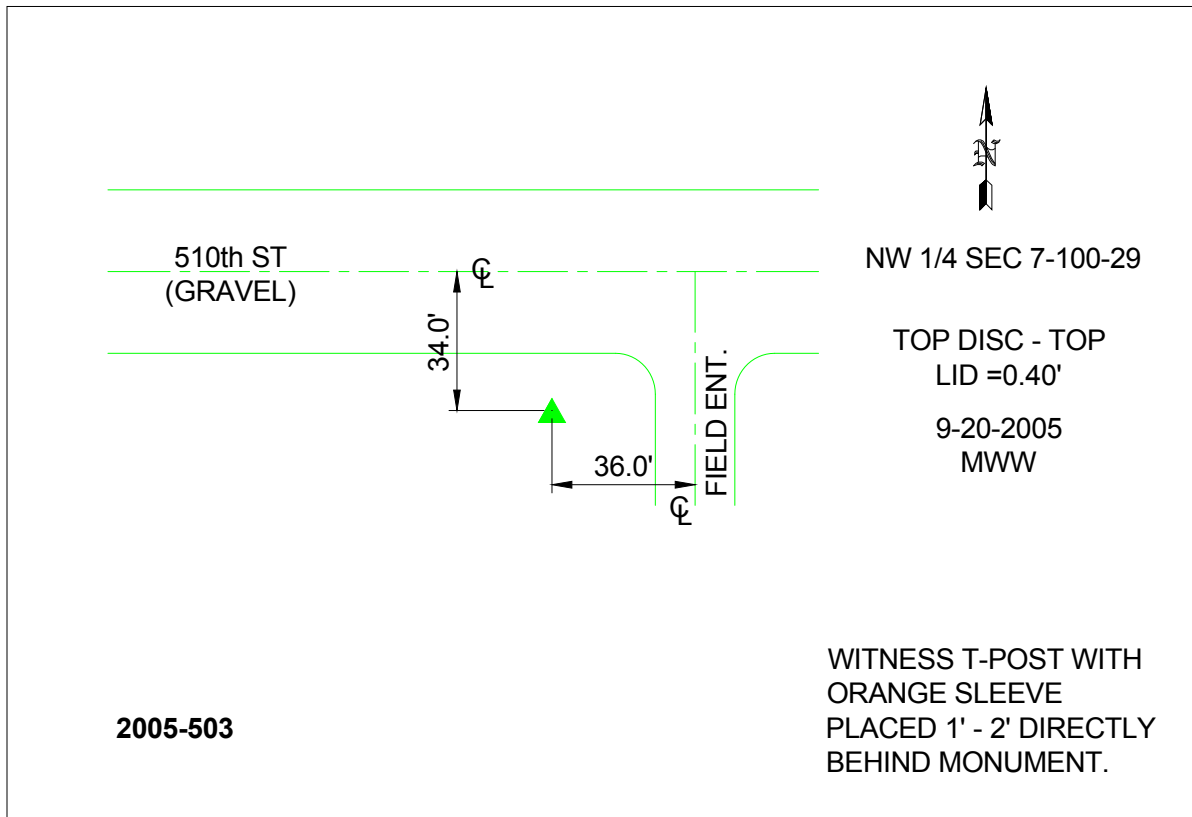
Northing: **4010838.41sft** Easting: **4702001.68sft**

Orthometric Height: **1197.11sft** Ellipsoid Height: **1104.36sft** **Geoid03**

Latitude: **43°30'00.43337"N** Longitude: **94°19'34.52022"W**

Mapping Angle: **-0°33'36"** Combination Scale Factor: **0.999998330**

**Monument Type:** Berntsen Top Security Rod Monument with a 2-1/2" dia. domed survey cap and permanent magnet encased in a 6"dia. PVC pipe with a NGS style aluminum access cover.



*This document was prepared by DCI and GBC for use by Kossuth County, Iowa.*