

Kossuth County, Iowa
Iowa North Zone (1401)
Horiz. Datum: NAD83(1996)
Vert. Datum: NAVD 1988
US Survey Feet
2005

Point Name: **506**

Designation: 2005-506 Kossuth Co GPS Control Point

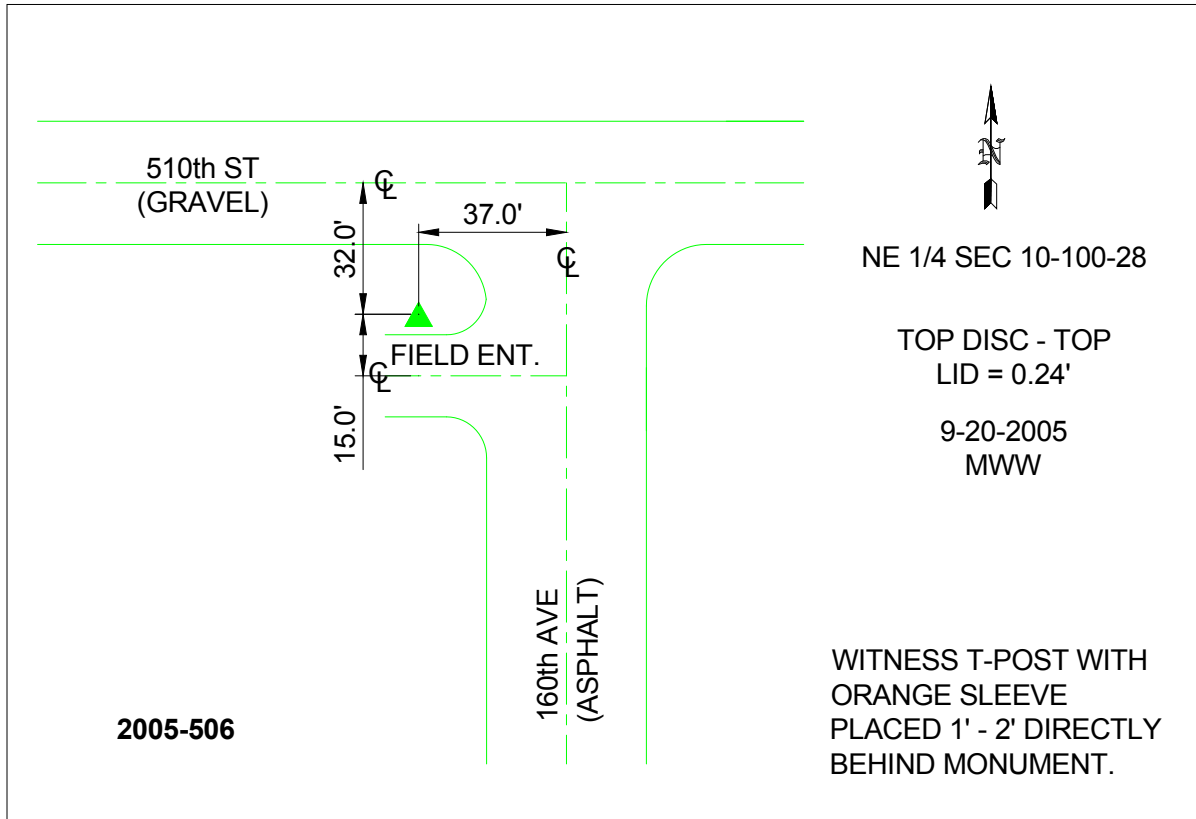
Northing: **4010378.32sft** Easting: **4749489.54sft**

Orthometric Height: **1117.67sft** Ellipsoid Height: **1024.68sft** **Geoid03**

Latitude: **43°29'59.97696"N** Longitude: **94°08'50.23794"W**

Mapping Angle: **-0°26'19"** Combination Scale Factor: **1.000002100**

Monument Type: Berntsen Top Security Rod Monument with a 2-1/2" dia. domed survey cap and permanent magnet encased in a 6"dia. PVC pipe with a NGS style aluminum access cover.



This document was prepared by DCI and GBC for use by Kossuth County, Iowa.