

Kossuth County, Iowa
Iowa North Zone (1401)
Horiz. Datum: NAD83(1996)
Vert. Datum: NAVD 1988
US Survey Feet
2005

Point Name: **510**

Designation: 2005-510 Kossuth Co GPS Control Point

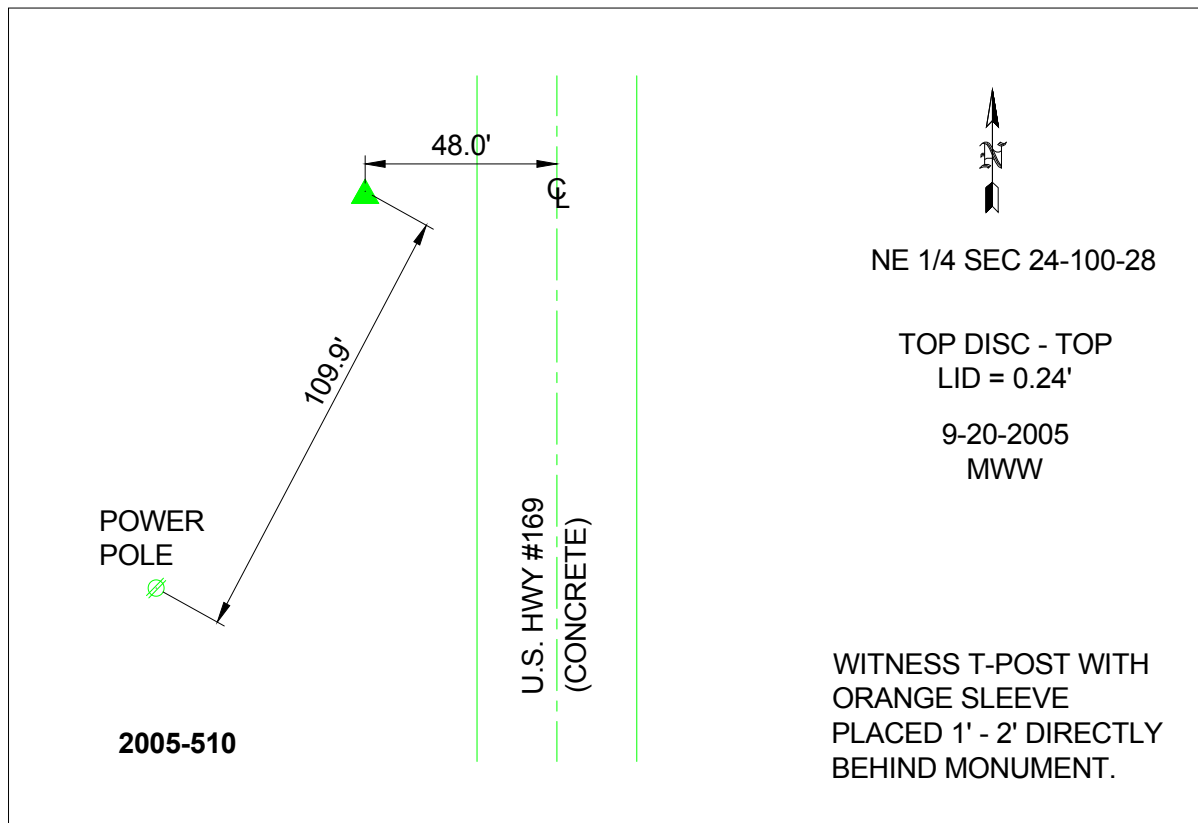
Northing: **4000121.14**sft Easting: **4764874.25**sft

Orthometric Height: **1129.93**sft Ellipsoid Height: **1036.65**sft **Geoid03**

Latitude: **43°28'19.79214"N** Longitude: **94°05'20.55438"W**

Mapping Angle: **-0°23'57"** Combination Scale Factor: **0.999994570**

Monument Type: Berntsen Top Security Rod Monument with a 2-1/2" dia. domed survey cap and permanent magnet encased in a 6"dia. PVC pipe with a NGS style aluminum access cover.



This document was prepared by DCI and GBC for use by Kossuth County, Iowa.