

**Kossuth County, Iowa**  
Iowa North Zone (1401)  
Horiz. Datum: NAD83(1996)  
Vert. Datum: NAVD 1988  
US Survey Feet  
**2005**

Point Name: **515**

**Designation:** 2005-515 Kossuth Co GPS Control Point

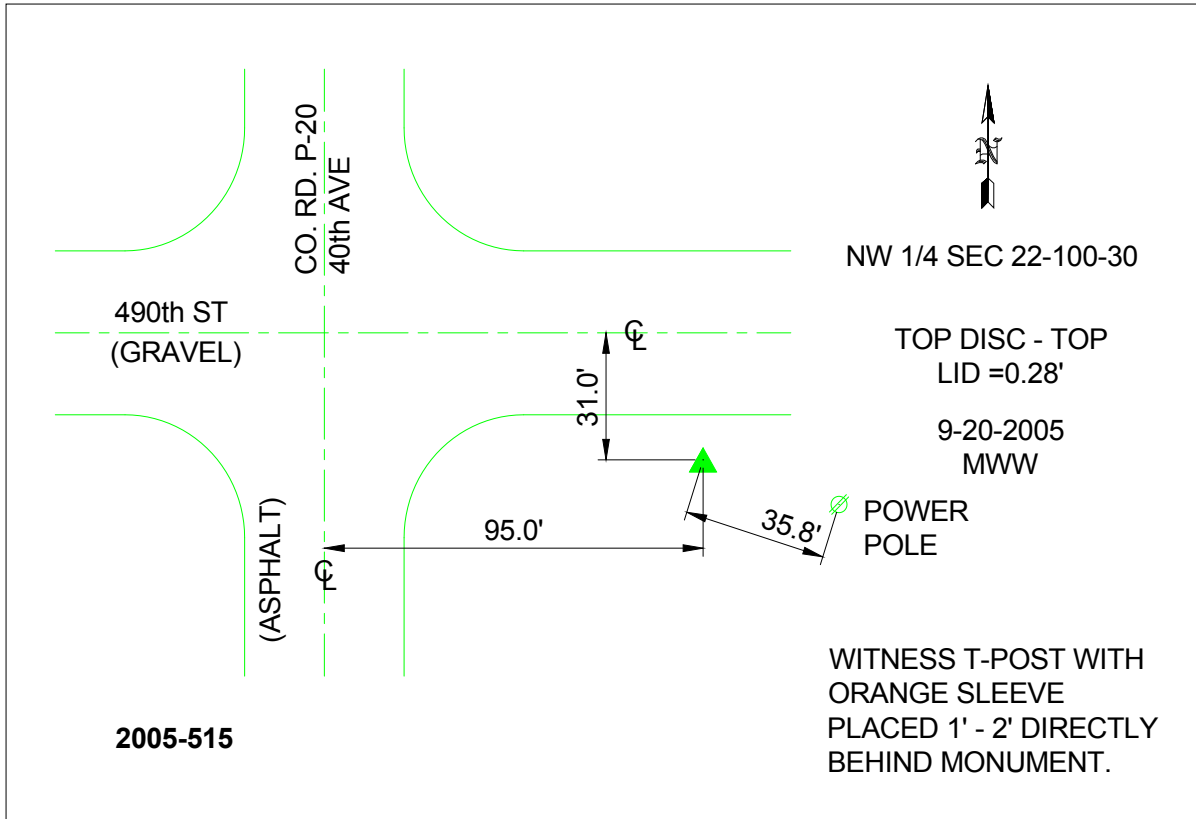
Northing: **4001357.52sft** Easting: **4686616.24sft**

Orthometric Height: **1193.52sft** Ellipsoid Height: **1100.71sft** **Geoid03**

Latitude: **43°28'25.26938"N** Longitude: **94°23'01.89350"W**

Mapping Angle: **-0°35'57"** Combination Scale Factor: **0.999991890**

**Monument Type:** Berntsen Top Security Rod Monument with a 2-1/2" dia. domed survey cap and permanent magnet encased in a 6"dia. PVC pipe with a NGS style aluminum access cover.



*This document was prepared by DCI and GBC for use by Kossuth County, Iowa.*