

Kossuth County, Iowa
Iowa North Zone (1401)
Horiz. Datum: NAD83(1996)
Vert. Datum: NAVD 1988
US Survey Feet
2005

Point Name: **521**

Designation: 2005-521 Kossuth Co GPS Control Point

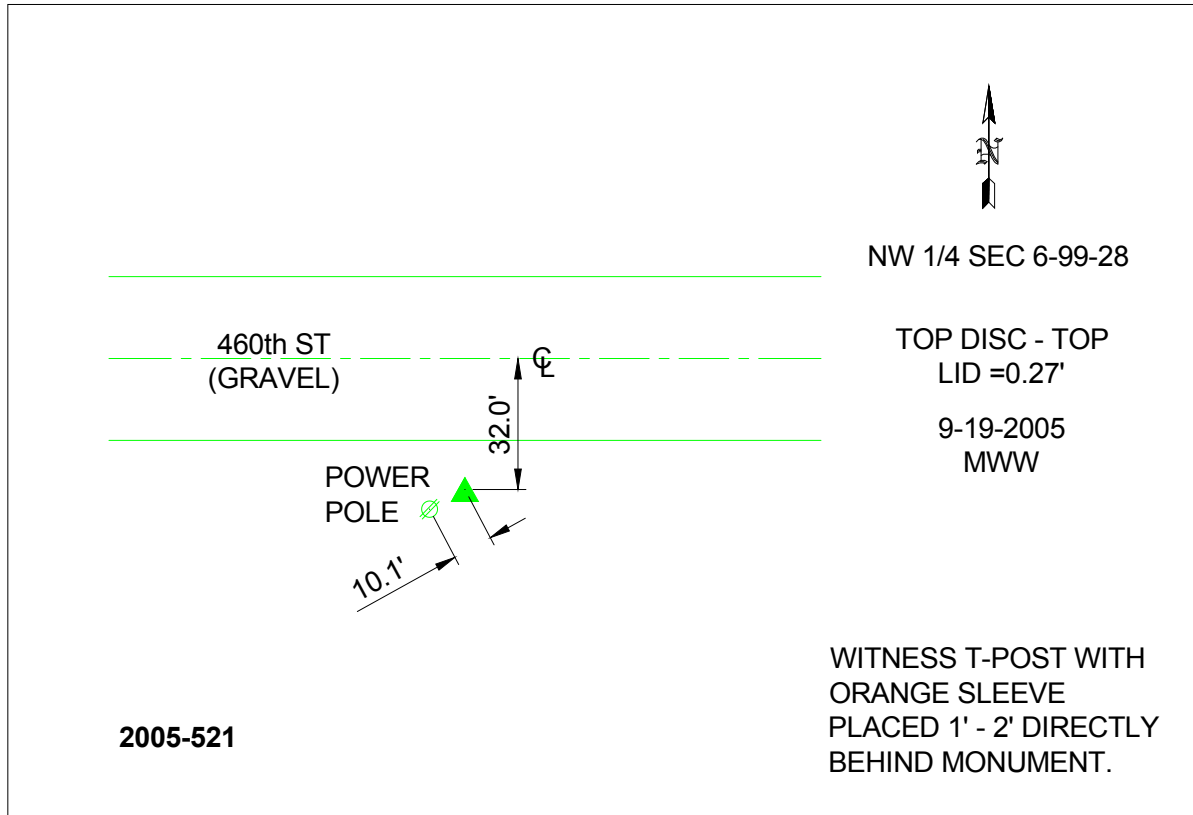
Northing: **3985000.25**sft Easting: **4734398.41**sft

Orthometric Height: **1154.48**sft Ellipsoid Height: **1061.22**sft **Geoid03**

Latitude: **43°25'48.16188"N** Longitude: **94°12'12.10264"W**

Mapping Angle: **-0°28'36"** Combination Scale Factor: **0.999983310**

Monument Type: Berntsen Top Security Rod Monument with a 2-1/2" dia. domed survey cap and permanent magnet encased in a 6"dia. PVC pipe with a NGS style aluminum access cover.



This document was prepared by DCI and GBC for use by Kossuth County, Iowa.