

Kossuth County, Iowa
Iowa North Zone (1401)
Horiz. Datum: NAD83(1996)
Vert. Datum: NAVD 1988
US Survey Feet
2005

Point Name: **522**

Designation: 2005-522 Kossuth Co GPS Control Point

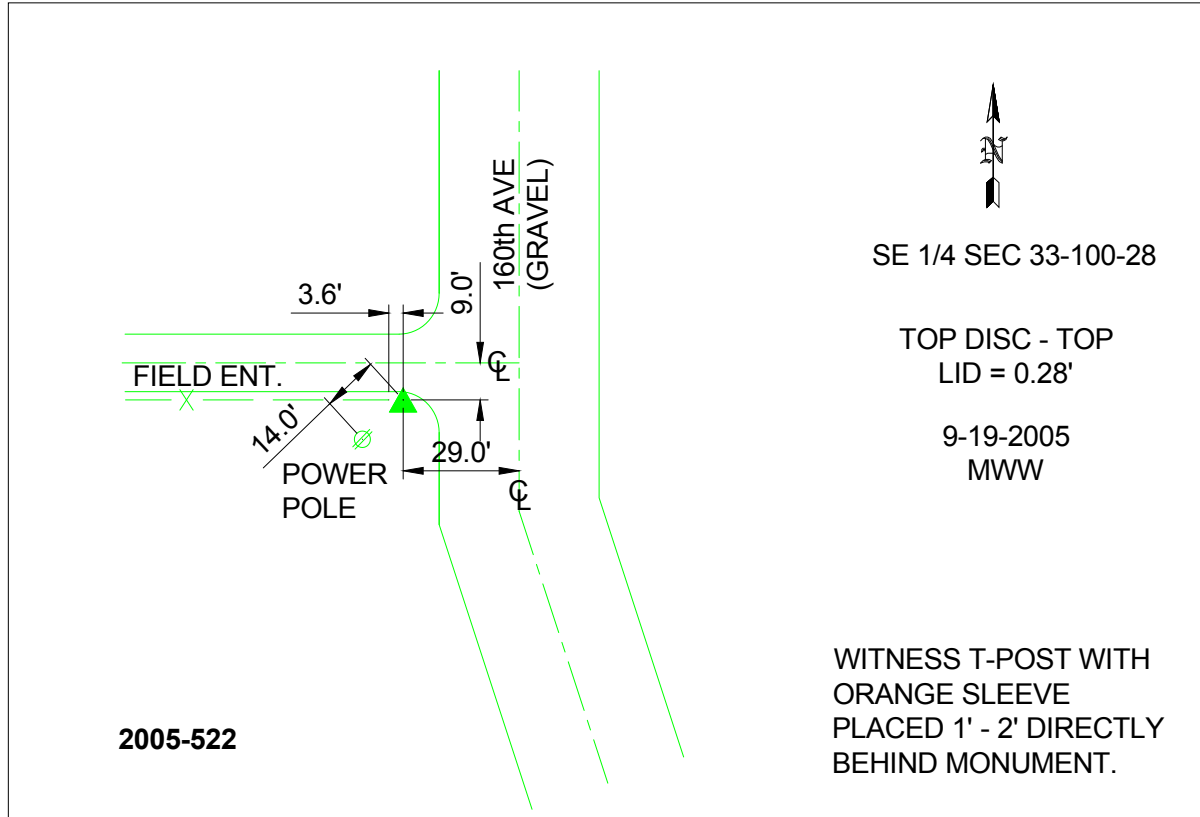
Northing: **3984977.02sft** Easting: **4749002.45sft**

Orthometric Height: **1138.82sft** Ellipsoid Height: **1045.46sft** **Geoid03**

Latitude: **43°25'49.08551"N** Longitude: **94°08'54.20293"W**

Mapping Angle: **-0°26'22"** Combination Scale Factor: **0.999984130**

Monument Type: Berntsen Top Security Rod Monument with a 2-1/2" dia. domed survey cap and permanent magnet encased in a 6"dia. PVC pipe with a NGS style aluminum access cover.



This document was prepared by DCI and GBC for use by Kossuth County, Iowa.