

**Kossuth County, Iowa**  
Iowa North Zone (1401)  
Horiz. Datum: NAD83(1996)  
Vert. Datum: NAVD 1988  
US Survey Feet  
**2005**

Point Name: **525**

**Designation:** 2005-525 Kossuth Co GPS Control Point

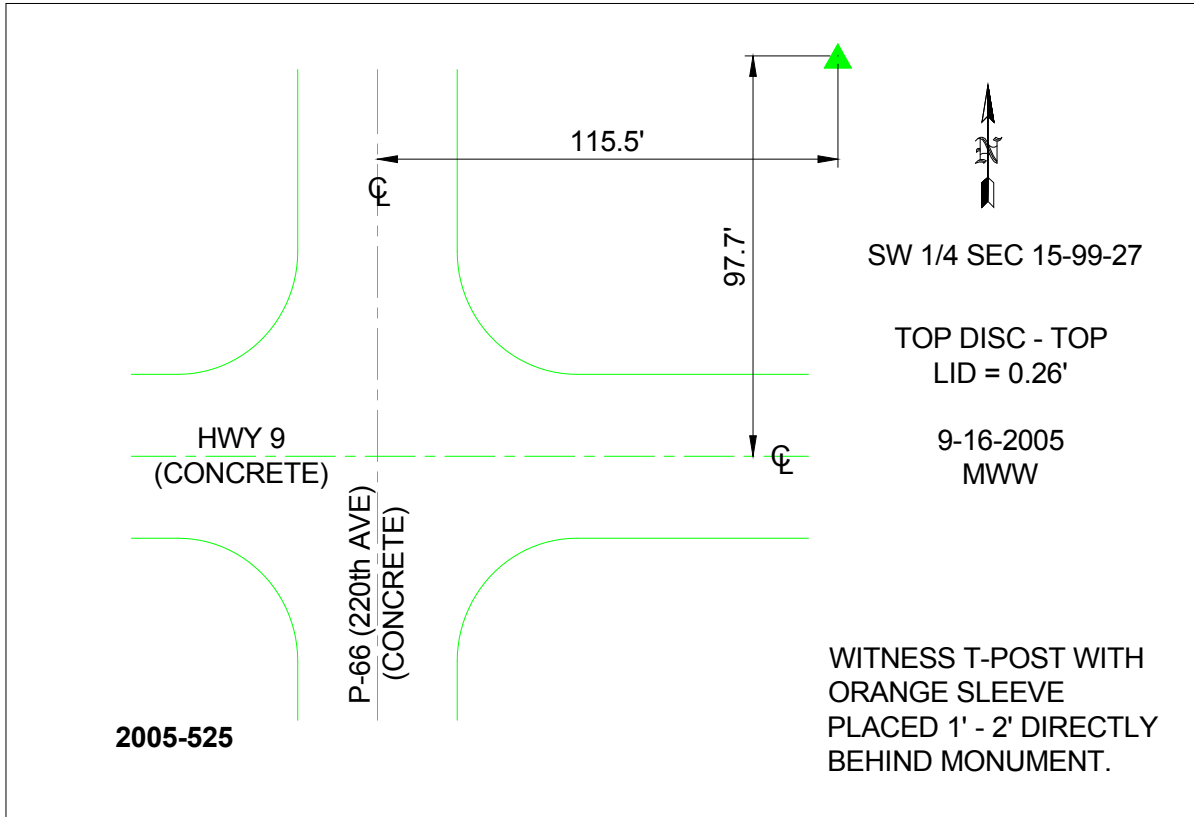
Northing: **3968487.70sft** Easting: **4780446.80sft**

Orthometric Height: **1157.04sft** Ellipsoid Height: **1062.95sft** **Geoid03**

Latitude: **43°23'08.40165"N** Longitude: **94°01'46.69905"W**

Mapping Angle: **-0°21'32"** Combination Scale Factor: **0.999973200**

**Monument Type:** Berntsen Top Security Rod Monument with a 2-1/2" dia. domed survey cap and permanent magnet encased in a 6"dia. PVC pipe with a NGS style aluminum access cover.



*This document was prepared by DCI and GBC for use by Kossuth County, Iowa.*