

Kossuth County, Iowa
Iowa North Zone (1401)
Horiz. Datum: NAD83(1996)
Vert. Datum: NAVD 1988
US Survey Feet
2005

Point Name: **526**

Designation: 2005-526 Kossuth Co GPS Control Point

Northing: **3968774.30**sft Easting: **4764784.24**sft

Orthometric Height: **1126.30**sft Ellipsoid Height: **1032.52**sft **Geoid03**

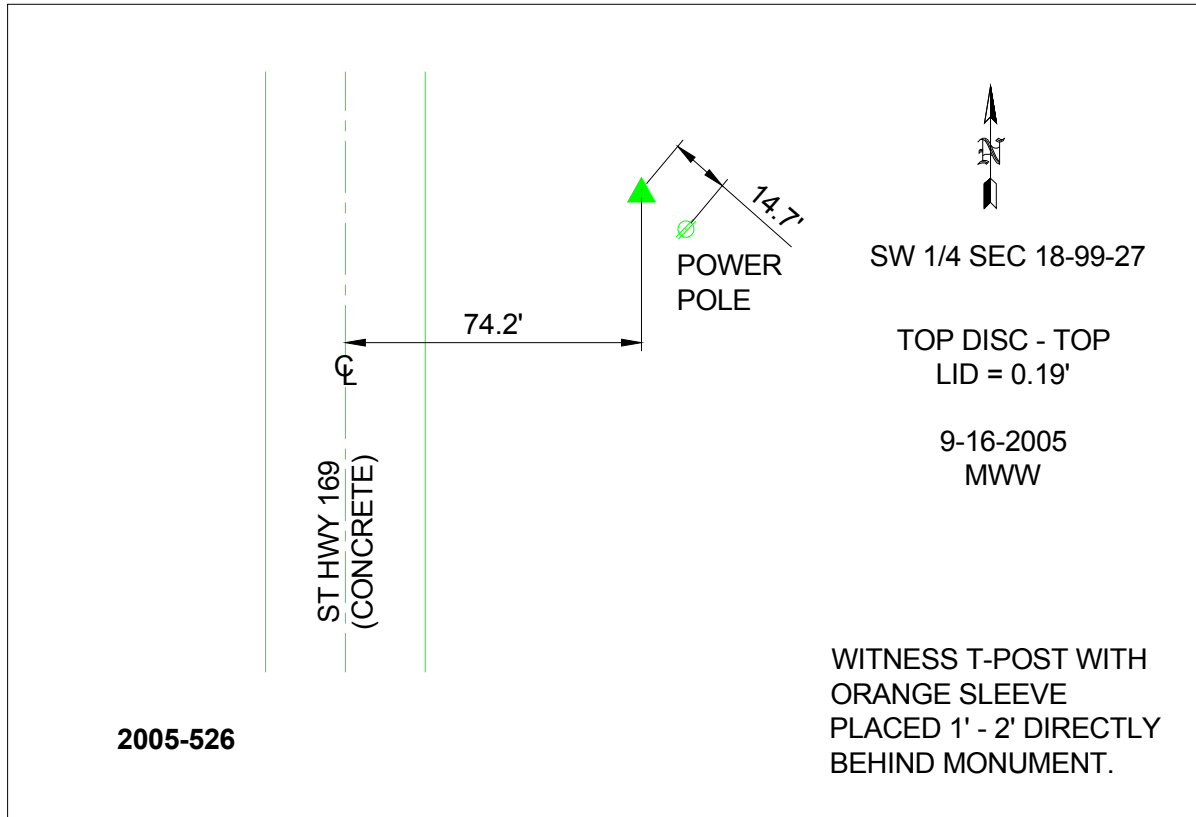
Latitude: **43°23'10.20906"N**

Longitude: **94°05'18.81558"W**

Mapping Angle: **-0°23'56"**

Combination Scale Factor: **0.999974760**

Monument Type: Berntsen Top Security Rod Monument with a 2-1/2" dia. domed survey cap and permanent magnet encased in a 6"dia. PVC pipe with a NGS style aluminum access cover.



This document was prepared by DCI and GBC for use by Kossuth County, Iowa.