

Kossuth County, Iowa
Iowa North Zone (1401)
Horiz. Datum: NAD83(1996)
Vert. Datum: NAVD 1988
US Survey Feet
2005

Point Name: **528**

Designation: 2005-528 Kossuth Co GPS Control Point

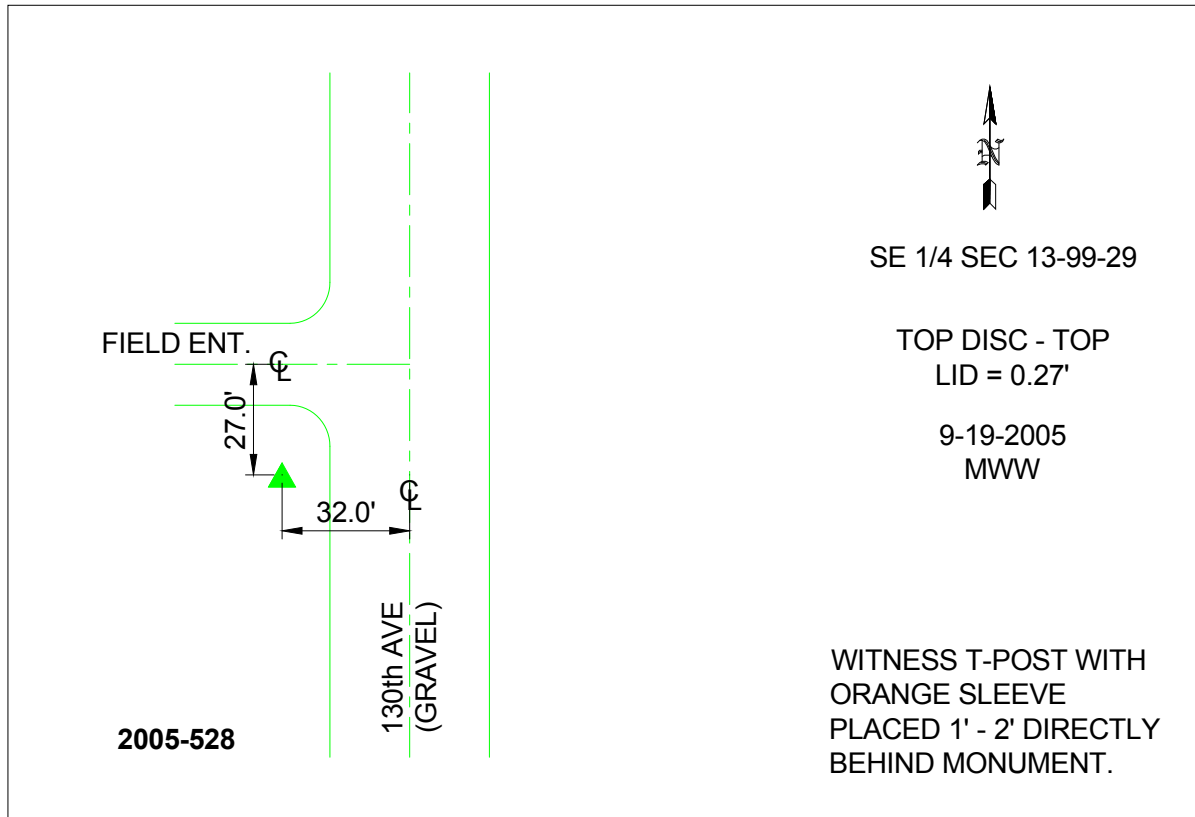
Northing: **3970303.45**sft Easting: **4733394.71**sft

Orthometric Height: **1157.89**sft Ellipsoid Height: **1064.42**sft **Geoid03**

Latitude: **43°23'22.93608"N** Longitude: **94°12'24.03864"W**

Mapping Angle: **-0°28'44"** Combination Scale Factor: **0.999974020**

Monument Type: Berntsen Top Security Rod Monument with a 2-1/2" dia. domed survey cap and permanent magnet encased in a 6"dia. PVC pipe with a NGS style aluminum access cover.



This document was prepared by DCI and GBC for use by Kossuth County, Iowa.