

**Kossuth County, Iowa**  
 Iowa North Zone (1401)  
 Horiz. Datum: NAD83(1996)  
 Vert. Datum: NAVD 1988  
 US Survey Feet  
**2005**

Point Name: **529**

**Designation:** 2005-529 Kossuth Co GPS Control Point

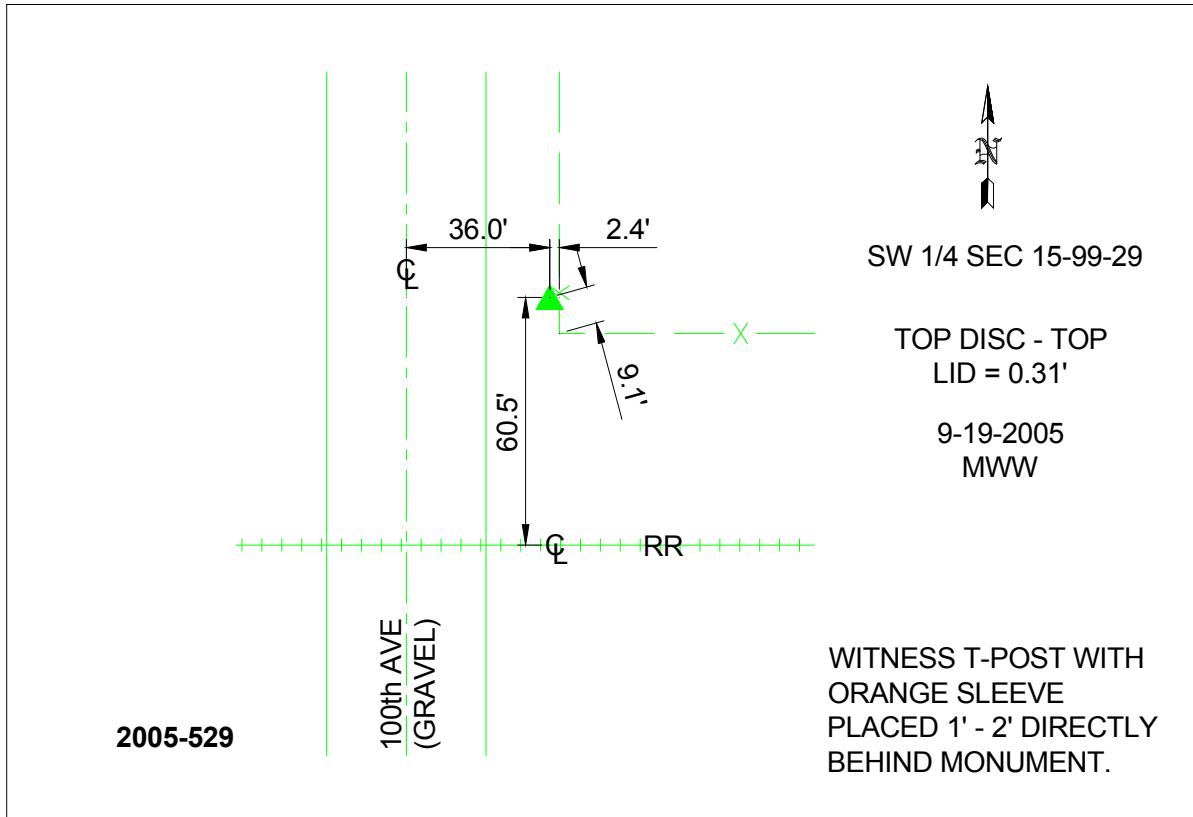
Northing: **3968976.25**sft Easting: **4717651.96**sft

Orthometric Height: **1167.07**sft Ellipsoid Height: **1073.69**sft **Geoid03**

Latitude: **43°23'08.47474"N** Longitude: **94°15'57.06161"W**

Mapping Angle: **-0°31'09"** Combination Scale Factor: **0.999972690**

**Monument Type:** Berntsen Top Security Rod Monument with a 2-1/2" dia. domed survey cap and permanent magnet encased in a 6"dia. PVC pipe with a NGS style aluminum access cover.



*This document was prepared by DCI and GBC for use by Kossuth County, Iowa.*