

Kossuth County, Iowa
Iowa North Zone (1401)
Horiz. Datum: NAD83(1996)
Vert. Datum: NAVD 1988
US Survey Feet
2005

Point Name: **532**

Designation: 2005-532 Kossuth Co GPS Control Point

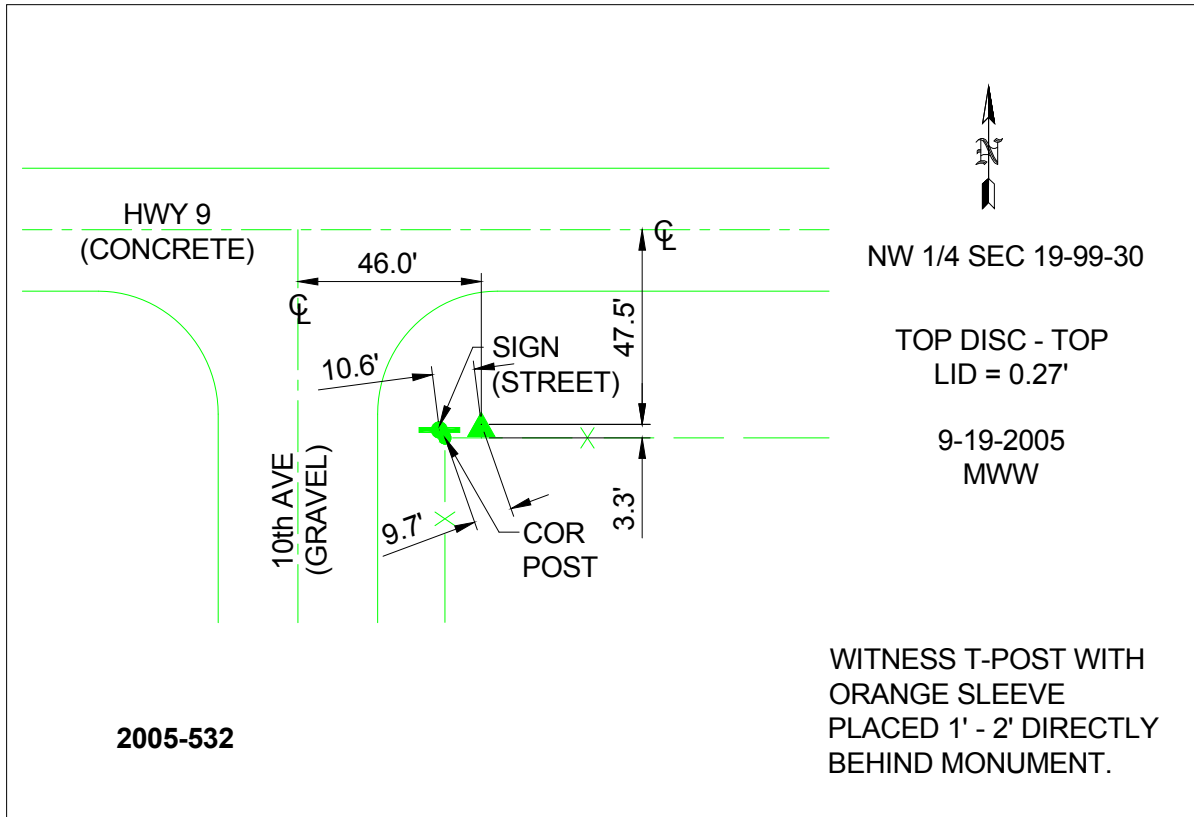
Northing: **3969248.07**sft Easting: **4670730.34**sft

Orthometric Height: **1223.91**sft Ellipsoid Height: **1130.80**sft **Geoid03**

Latitude: **43°23'06.47740"N** Longitude: **94°26'32.45298"W**

Mapping Angle: **-0°38'19"** Combination Scale Factor: **0.999969850**

Monument Type: Berntsen Top Security Rod Monument with a 2-1/2" dia. domed survey cap and permanent magnet encased in a 6"dia. PVC pipe with a NGS style aluminum access cover.



This document was prepared by DCI and GBC for use by Kossuth County, Iowa.