

**Kossuth County, Iowa**  
Iowa North Zone (1401)  
Horiz. Datum: NAD83(1996)  
Vert. Datum: NAVD 1988  
US Survey Feet  
**2005**

**Note: The original 537 has been destroyed and was replaced in 2011 with 631**

Point Name: **537**

**Designation:** ~~2005-537 Kossuth Co GPS Control Point~~

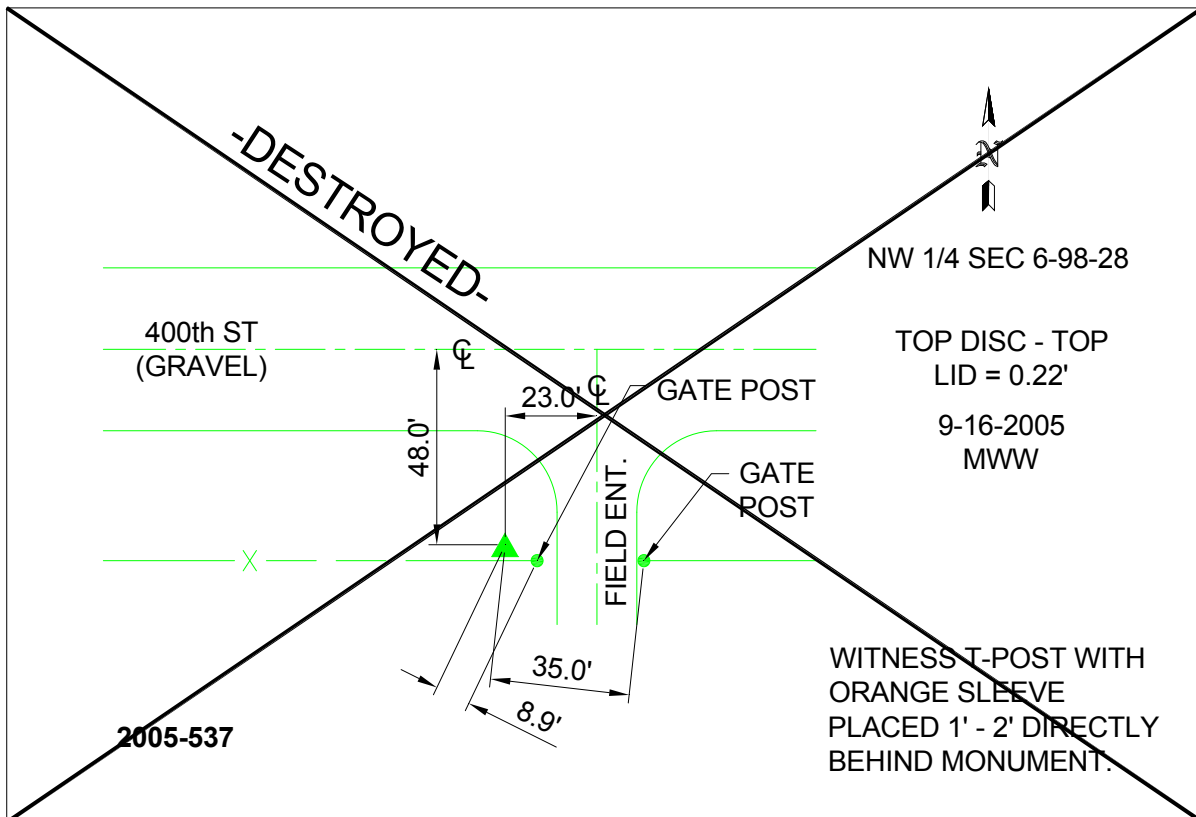
Northing: ~~3952927.67~~sft Easting: ~~4734511.54~~sft

Orthometric Height: ~~1162.12~~sft Ellipsoid Height: ~~1068.40~~sft **Geoid03**

Latitude: **43°20'31.42479"N** Longitude: **94°12'06.96087"W**

Mapping Angle: ~~-0°28'33"~~ Combination Scale Factor: **0.999963670**

**Monument Type:** Berntsen Top Security Rod Monument with a 2-1/2" dia. domed survey cap and permanent magnet encased in a 6"dia. PVC pipe with a NGS style aluminum access cover.



*This document was prepared by DCI and GBC for use by Kossuth County, Iowa.*