

Kossuth County, Iowa
Iowa North Zone (1401)
Horiz. Datum: NAD83(1996)
Vert. Datum: NAVD 1988
US Survey Feet
2005

Point Name: **538**

Designation: 2005-538 Kossuth Co GPS Control Point

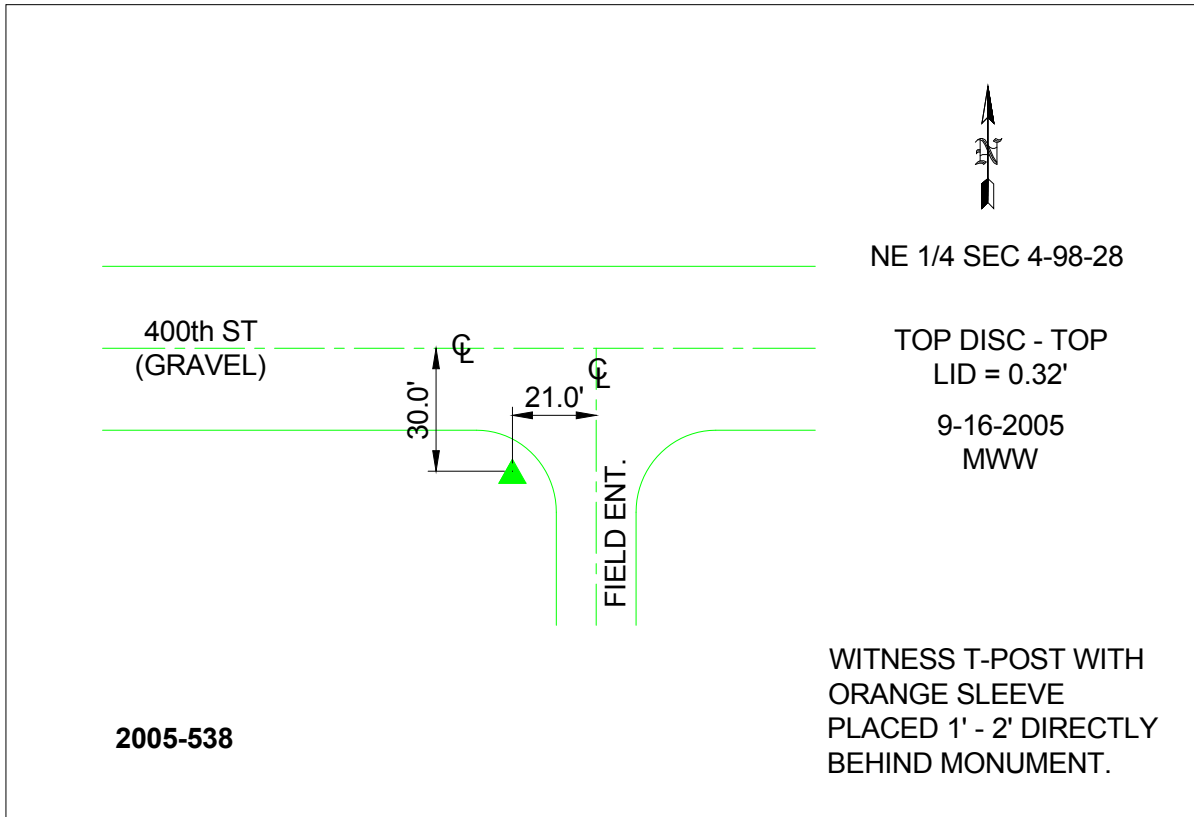
Northing: **3952862.39sft** Easting: **4748057.40sft**

Orthometric Height: **1161.24sft** Ellipsoid Height: **1067.37sft** **Geoid03**

Latitude: **43°20'31.85057"N** Longitude: **94°09'03.65789"W**

Mapping Angle: **-0°26'28"** Combination Scale Factor: **0.999963750**

Monument Type: Berntsen Top Security Rod Monument with a 2-1/2" dia. domed survey cap and permanent magnet encased in a 6"dia. PVC pipe with a NGS style aluminum access cover.



This document was prepared by DCI and GBC for use by Kossuth County, Iowa.