

**Kossuth County, Iowa**  
Iowa North Zone (1401)  
Horiz. Datum: NAD83(1996)  
Vert. Datum: NAVD 1988  
US Survey Feet  
**2005**

Point Name: **540**

**Designation:** 2005-540 Kossuth Co GPS Control Point

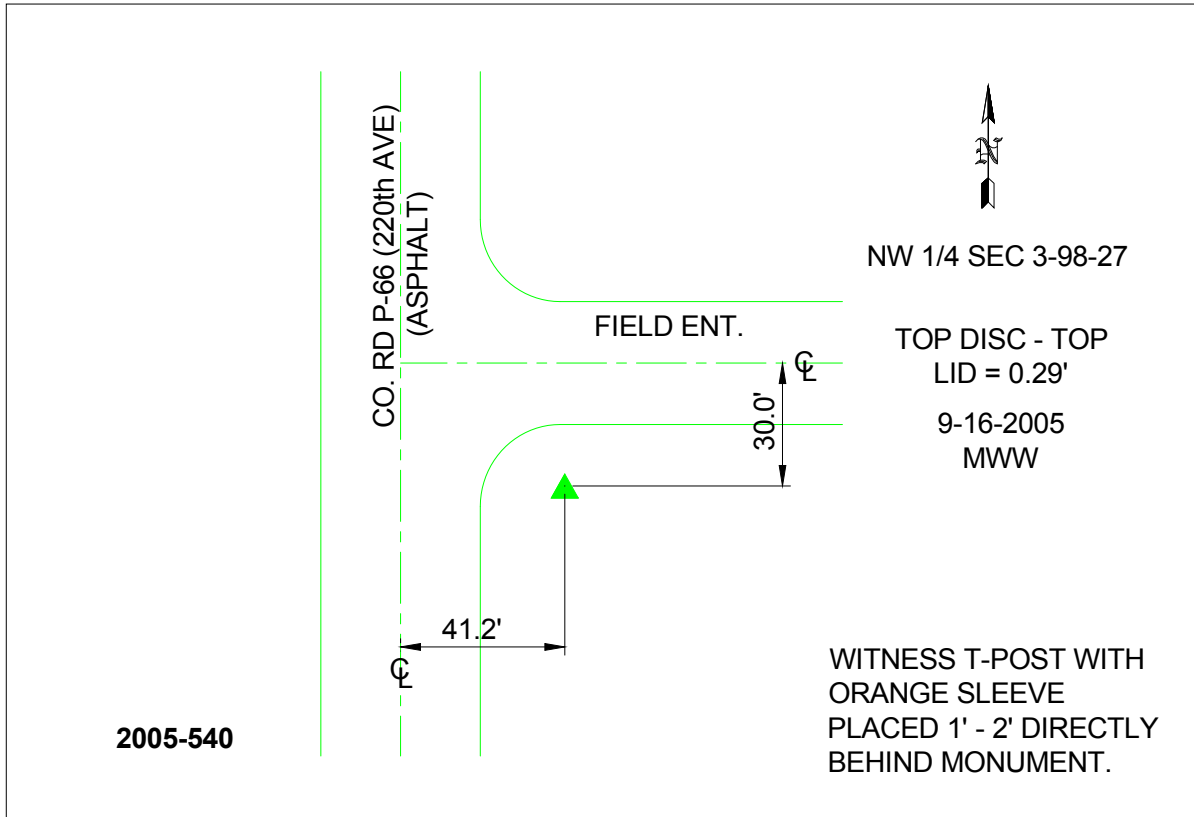
Northing: **3952493.53sft** Easting: **4780344.12sft**

Orthometric Height: **1168.50sft** Ellipsoid Height: **1074.13sft** **Geoid03**

Latitude: **43°20'30.43435"N** Longitude: **94°01'46.73253"W**

Mapping Angle: **-0°21'32"** Combination Scale Factor: **0.999963340**

**Monument Type:** Berntsen Top Security Rod Monument with a 2-1/2" dia. domed survey cap and permanent magnet encased in a 6"dia. PVC pipe with a NGS style aluminum access cover.



*This document was prepared by DCI and GBC for use by Kossuth County, Iowa.*