

Kossuth County, Iowa
Iowa North Zone (1401)
Horiz. Datum: NAD83(1996)
Vert. Datum: NAVD 1988
US Survey Feet
2005

Point Name: **545**

Designation: 2005-545 Kossuth Co GPS Control Point

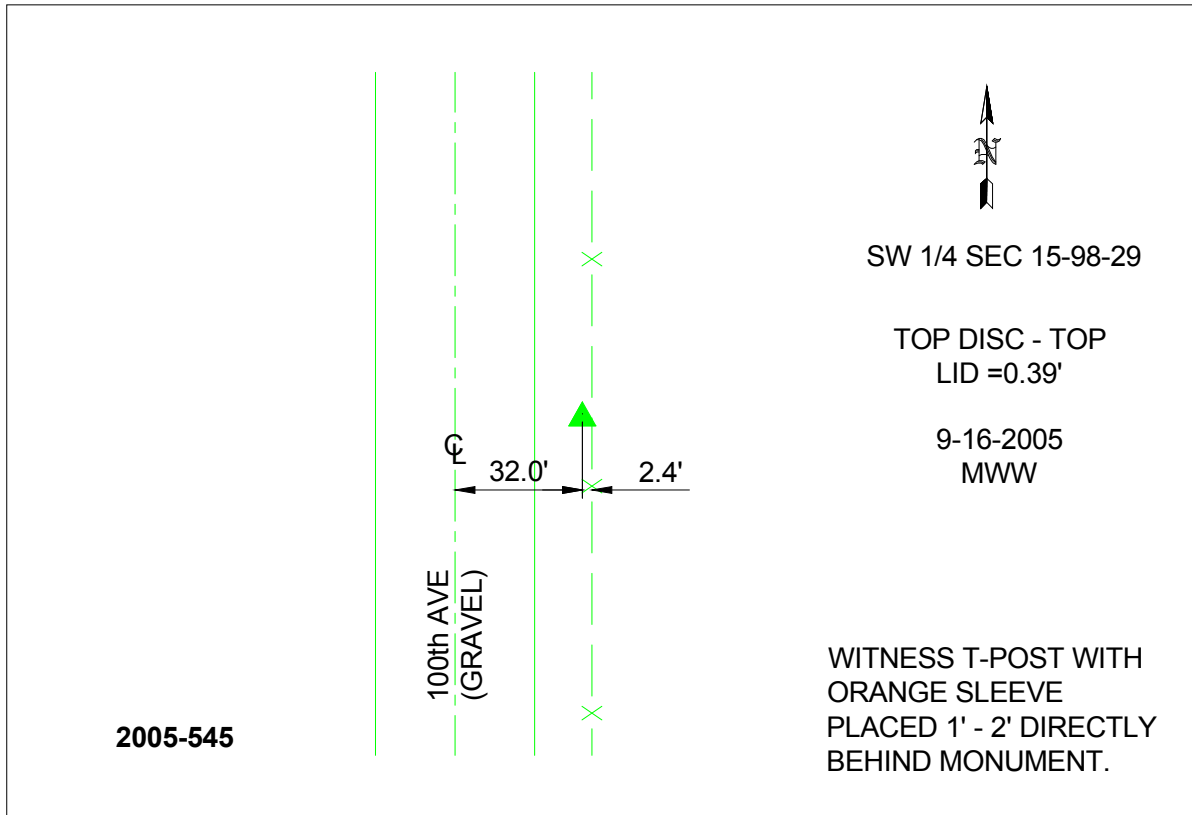
Northing: **3938759.59sft** Easting: **4717367.32sft**

Orthometric Height: **1165.64sft** Ellipsoid Height: **1071.90sft** **Geoid03**

Latitude: **43°18'10.02884"N** Longitude: **94°15'57.20891"W**

Mapping Angle: **-0°31'09"** Combination Scale Factor: **0.999955660**

Monument Type: Berntsen Top Security Rod Monument with a 2-1/2" dia. domed survey cap and permanent magnet encased in a 6"dia. PVC pipe with a NGS style aluminum access cover.



This document was prepared by DCI and GBC for use by Kossuth County, Iowa.