

**Kossuth County, Iowa**  
Iowa North Zone (1401)  
Horiz. Datum: NAD83(1996)  
Vert. Datum: NAVD 1988  
US Survey Feet  
**2005**

Point Name: **551**

**Designation:** 2005-551 Kossuth Co GPS Control Point

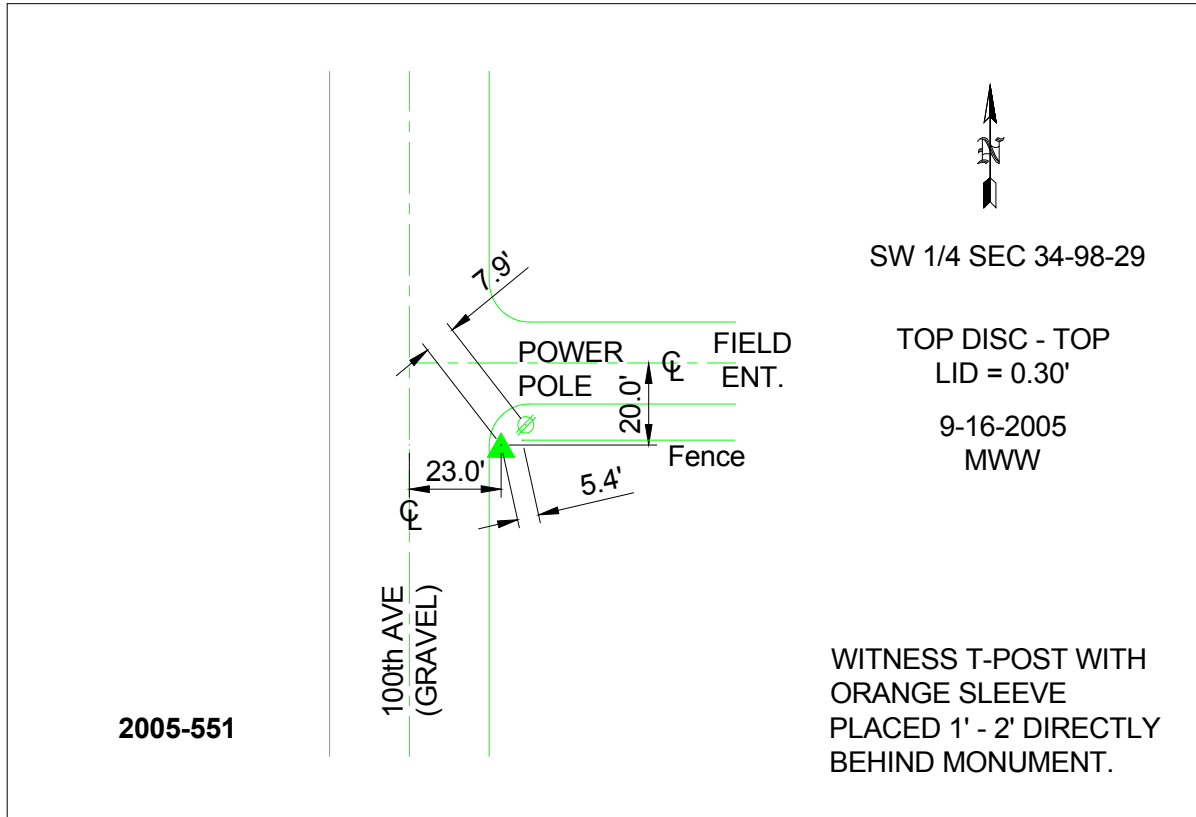
Northing: **3922590.76**sft Easting: **4717267.14**sft

Orthometric Height: **1163.60**sft Ellipsoid Height: **1069.69**sft **Geoid03**

Latitude: **43°15'30.33241"N** Longitude: **94°15'56.58316"W**

Mapping Angle: **-0°31'08"** Combination Scale Factor: **0.999947470**

**Monument Type:** Berntsen Top Security Rod Monument with a 2-1/2" dia. domed survey cap and permanent magnet encased in a 6"dia. PVC pipe with a NGS style aluminum access cover.



*This document was prepared by DCI and GBC for use by Kossuth County, Iowa.*