

Kossuth County, Iowa
Iowa North Zone (1401)
Horiz. Datum: NAD83(1996)
Vert. Datum: NAVD 1988
US Survey Feet
2005

Point Name: **559**

Designation: 2005-559 Kossuth Co GPS Control Point

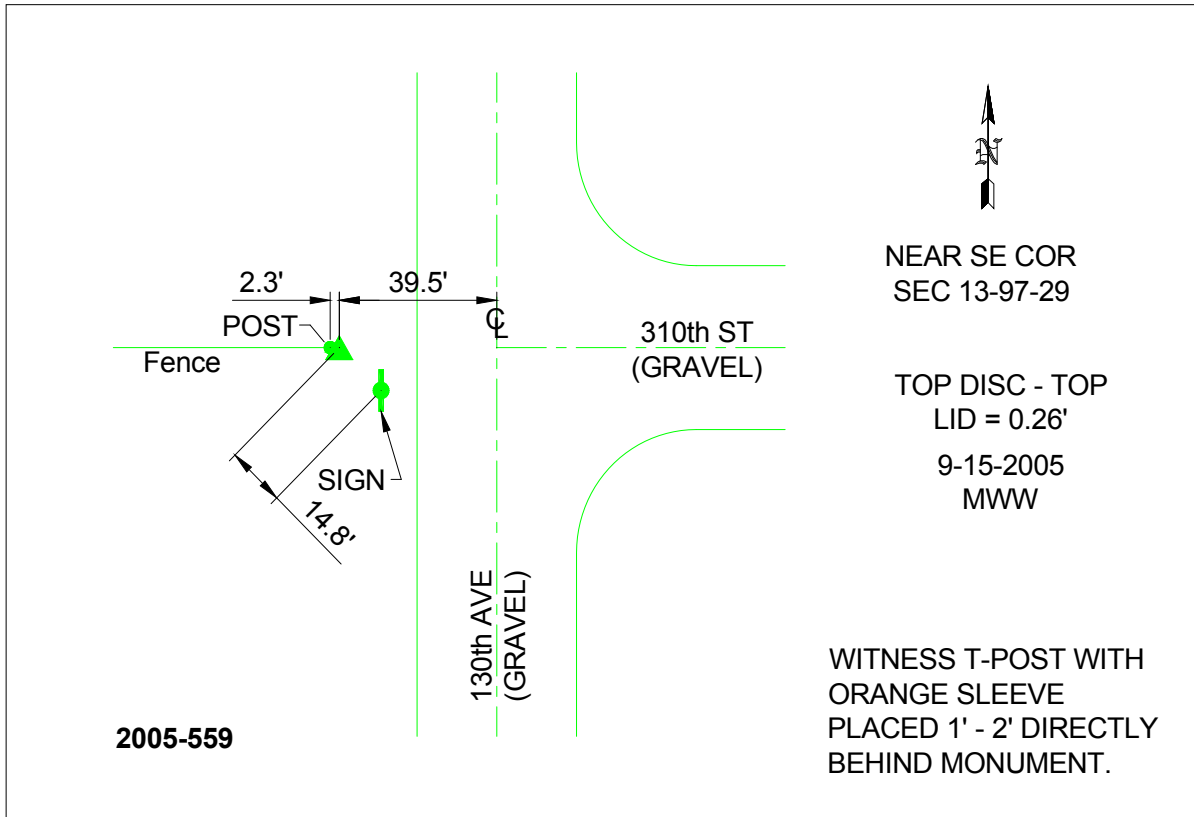
Northing: **3905525.85**sft Easting: **4732884.02**sft

Orthometric Height: **1162.27**sft Ellipsoid Height: **1067.95**sft **Geoid03**

Latitude: **43°12'43.13487"N** Longitude: **94°12'23.62262"W**

Mapping Angle: **-0°28'44"** Combination Scale Factor: **0.999939510**

Monument Type: Berntsen Top Security Rod Monument with a 2-1/2" dia. domed survey cap and permanent magnet encased in a 6"dia. PVC pipe with a NGS style aluminum access cover.



This document was prepared by DCI and GBC for use by Kossuth County, Iowa.