

Kossuth County, Iowa
Iowa North Zone (1401)
Horiz. Datum: NAD83(1996)
Vert. Datum: NAVD 1988
US Survey Feet
2005

Point Name: **566**

Designation: 2005-566 Kossuth Co GPS Control Point

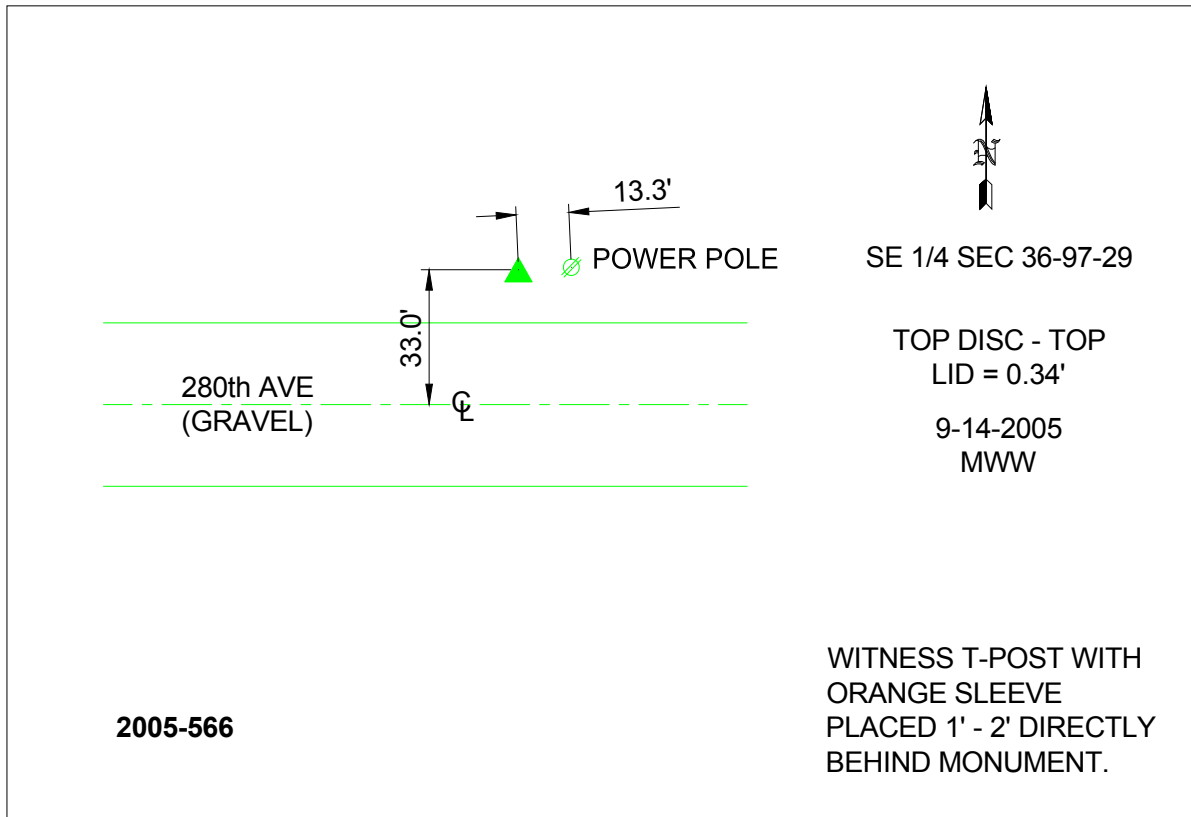
Northing: **3889744.40sft** Easting: **4732091.43sft**

Orthometric Height: **1177.93sft** Ellipsoid Height: **1083.41sft** **Geoid03**

Latitude: **43°10'07.20184"N** Longitude: **94°12'32.53769"W**

Mapping Angle: **-0°28'50"** Combination Scale Factor: **0.999931880**

Monument Type: Berntsen Top Security Rod Monument with a 2-1/2" dia. domed survey cap and permanent magnet encased in a 6"dia. PVC pipe with a NGS style aluminum access cover.



This document was prepared by DCI and GBC for use by Kossuth County, Iowa.