

**Kossuth County, Iowa**  
Iowa North Zone (1401)  
Horiz. Datum: NAD83(1996)  
Vert. Datum: NAVD 1988  
US Survey Feet  
**2005**

Point Name: **567**

**Designation:** 2005-567 Kossuth Co GPS Control Point

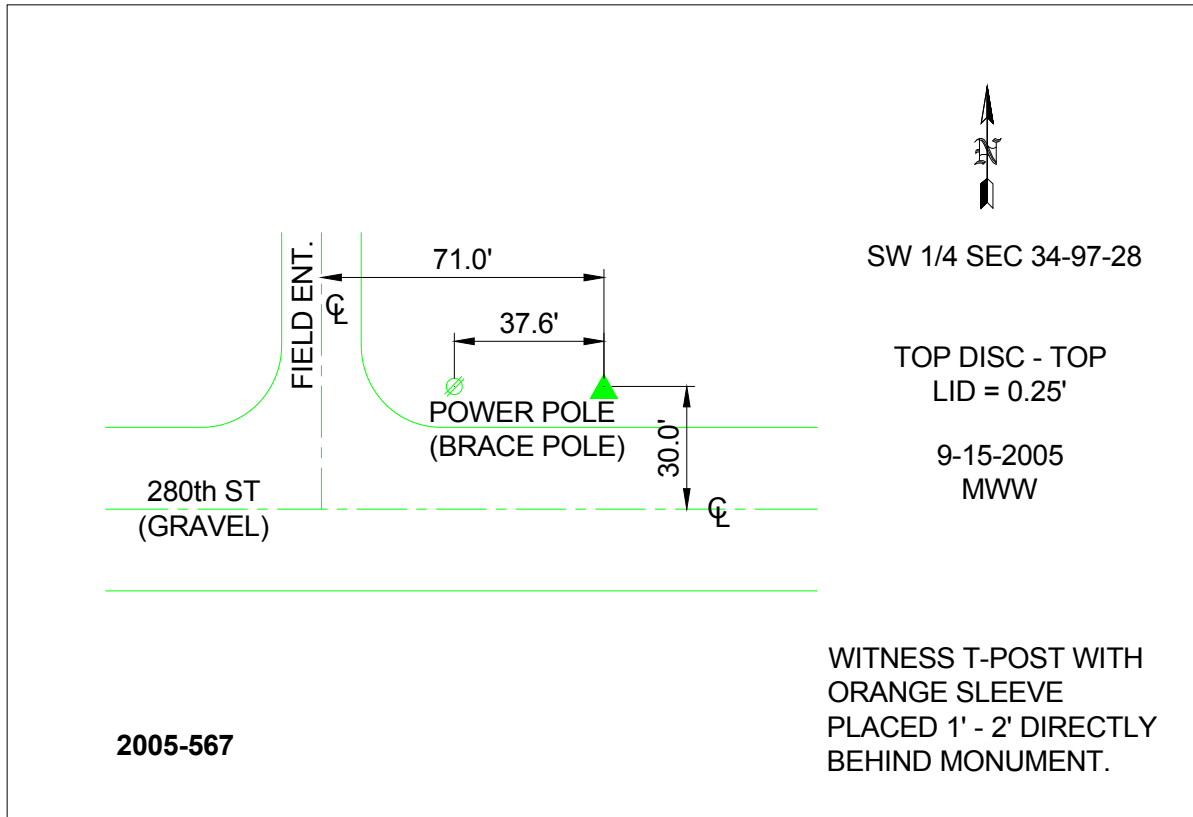
Northing: **3889856.39**sft Easting: **4748449.91**sft

Orthometric Height: **1173.68**sft Ellipsoid Height: **1078.89**sft **Geoid03**

Latitude: **43°10'09.60440"N** Longitude: **94°08'51.81418"W**

Mapping Angle: **-0°26'20"** Combination Scale Factor: **0.999932190**

**Monument Type:** Berntsen Top Security Rod Monument with a 2-1/2" dia. domed survey cap and permanent magnet encased in a 6"dia. PVC pipe with a NGS style aluminum access cover.



*This document was prepared by DCI and GBC for use by Kossuth County, Iowa.*