

Kossuth County, Iowa
Iowa North Zone (1401)
Horiz. Datum: NAD83(1996)
Vert. Datum: NAVD 1988
US Survey Feet
2005

Point Name: **569**

Designation: 2005-569 Kossuth Co GPS Control Point

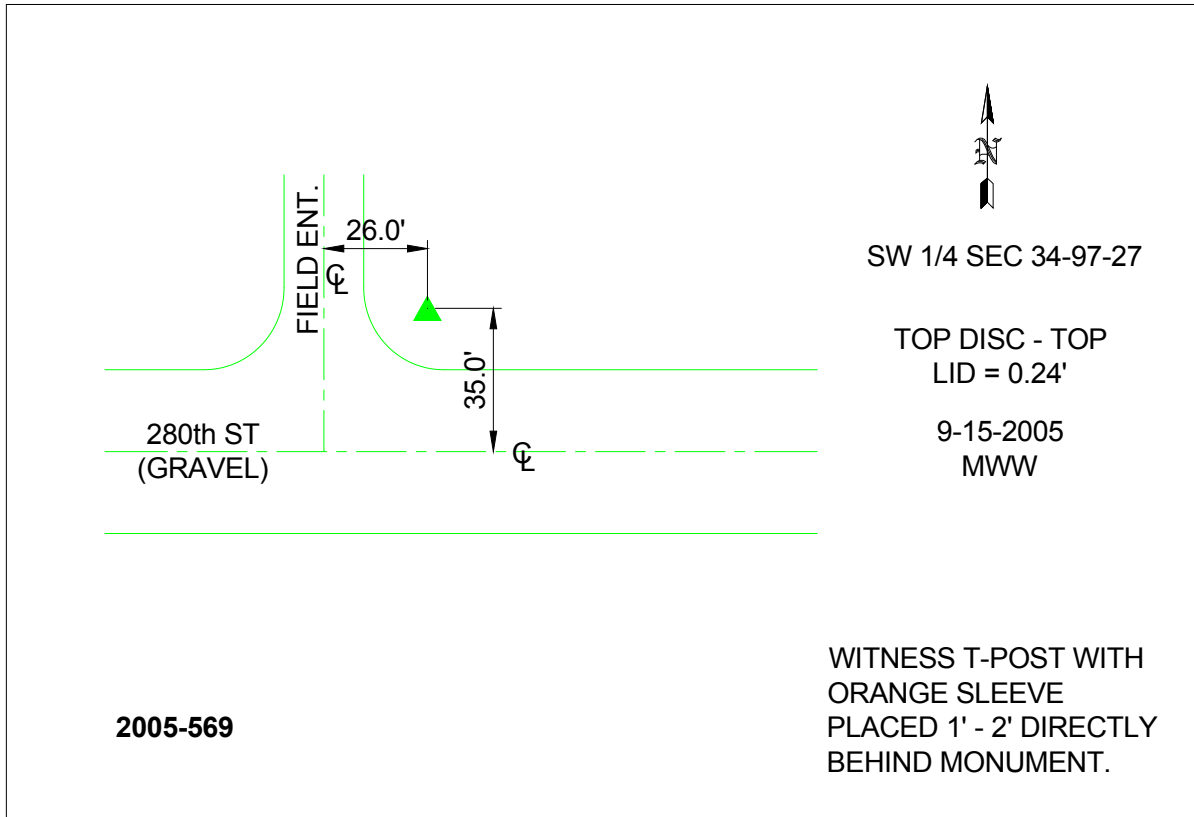
Northing: **3889628.07**sft Easting: **4780449.71**sft

Orthometric Height: **1181.74**sft Ellipsoid Height: **1086.34**sft **Geoid03**

Latitude: **43°10'09.54675"N** Longitude: **94°01'39.99297"W**

Mapping Angle: **-0°21'28"** Combination Scale Factor: **0.999931840**

Monument Type: Berntsen Top Security Rod Monument with a 2-1/2" dia. domed survey cap and permanent magnet encased in a 6"dia. PVC pipe with a NGS style aluminum access cover.



This document was prepared by DCI and GBC for use by Kossuth County, Iowa.