

Kossuth County, Iowa
Iowa North Zone (1401)
Horiz. Datum: NAD83(1996)
Vert. Datum: NAVD 1988
US Survey Feet
2005

Note: The original 570 has been destroyed and was replaced in 2011 with 630

Point Name: **570**

Designation: ~~2005-570 Kossuth Co GPS Control Point~~

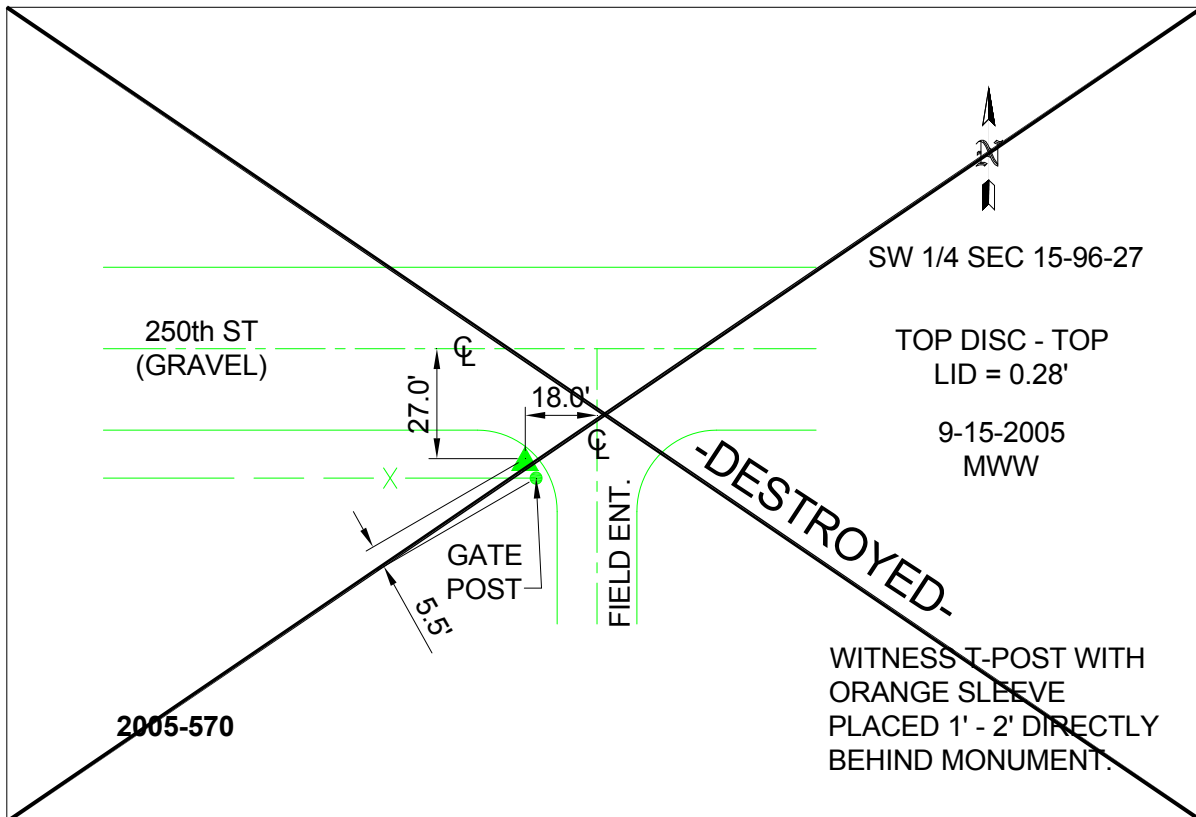
Northing: ~~3874534.17~~sft Easting: ~~4780000.12~~sft

Orthometric Height: ~~1200.93~~sft Ellipsoid Height: ~~1105.36~~sft **Geoid03**

Latitude: **43°07'40.43789"N** Longitude: **94°01'44.78490"W**

Mapping Angle: ~~-0°21'31"~~ Combination Scale Factor: **0.999924860**

Monument Type: Berntsen Top Security Rod Monument with a 2-1/2" dia. domed survey cap and permanent magnet encased in a 6"dia. PVC pipe with a NGS style aluminum access cover.



This document was prepared by DCI and GBC for use by Kossuth County, Iowa.