

Kossuth County, Iowa
Iowa North Zone (1401)
Horiz. Datum: NAD83(1996)
Vert. Datum: NAVD 1988
US Survey Feet
2005

Point Name: **571**

Designation: 2005-571 Kossuth Co GPS Control Point

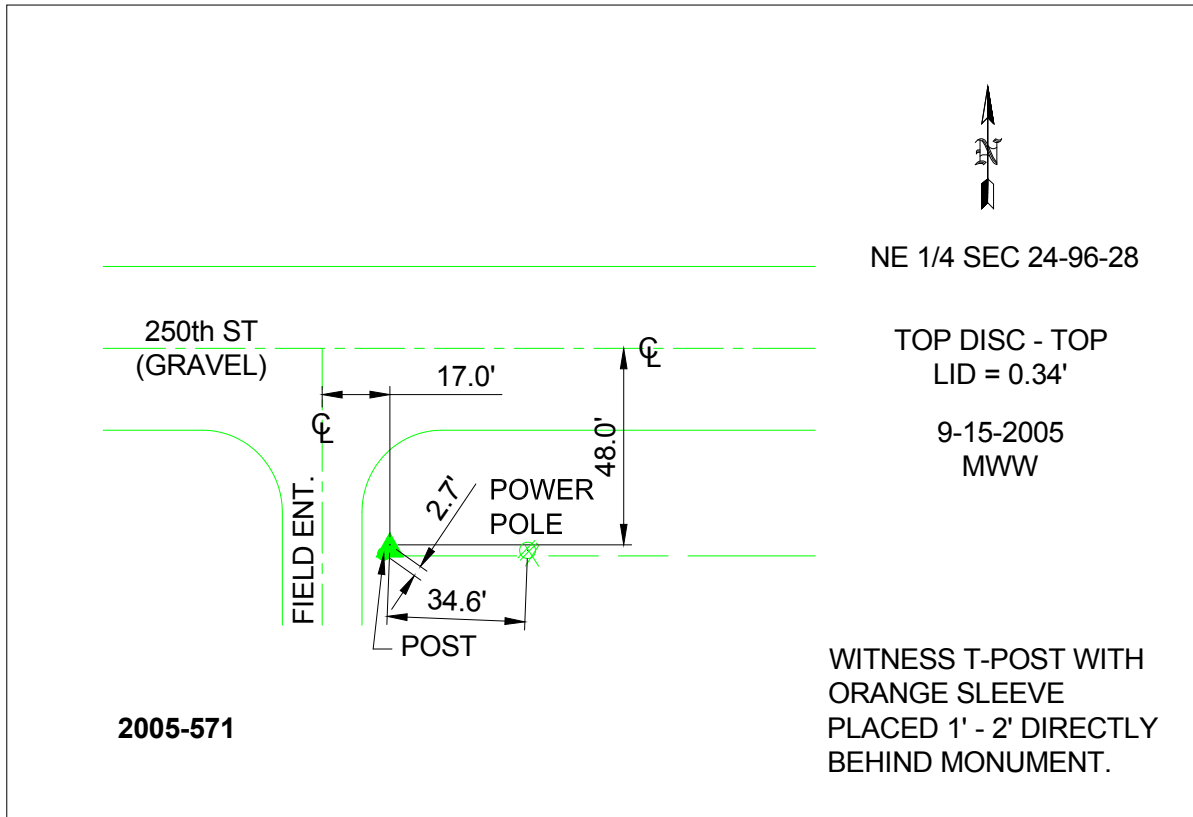
Northing: **3873980.53**sft Easting: **4763547.88**sft

Orthometric Height: **1196.23**sft Ellipsoid Height: **1100.94**sft **Geoid03**

Latitude: **43°07'33.89333"N** Longitude: **94°05'26.58781"W**

Mapping Angle: **-0°24'01"** Combination Scale Factor: **0.999924810**

Monument Type: Berntsen Top Security Rod Monument with a 2-1/2" dia. domed survey cap and permanent magnet encased in a 6"dia. PVC pipe with a NGS style aluminum access cover.



This document was prepared by DCI and GBC for use by Kossuth County, Iowa.