

**Kossuth County, Iowa**  
Iowa North Zone (1401)  
Horiz. Datum: NAD83(1996)  
Vert. Datum: NAVD 1988  
US Survey Feet  
**2005**

Point Name: **575**

**Designation:** 2005-575 Kossuth Co GPS Control Point

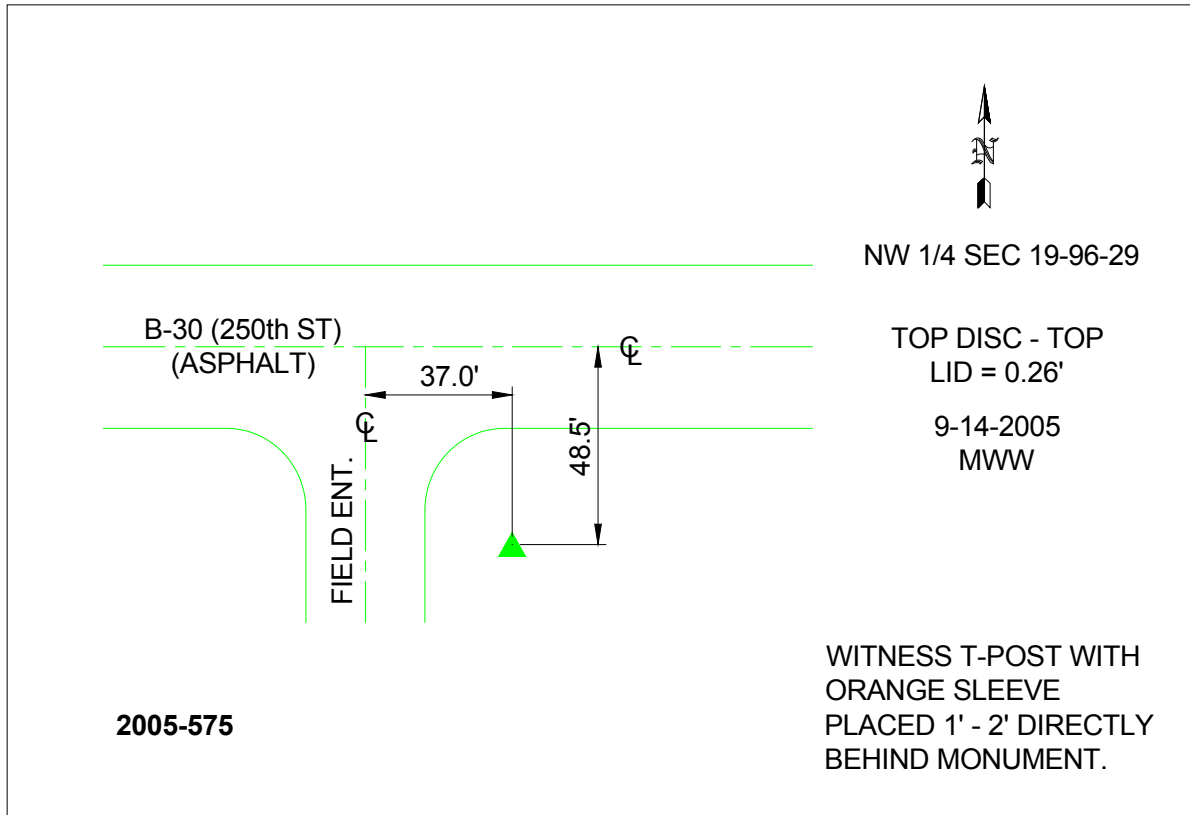
Northing: **3874521.77**sft Easting: **4701274.47**sft

Orthometric Height: **1211.43**sft Ellipsoid Height: **1117.21**sft **Geoid03**

Latitude: **43°07'34.09256"N** Longitude: **94°19'26.36030"W**

Mapping Angle: **-0°33'30"** Combination Scale Factor: **0.999924050**

**Monument Type:** Berntsen Top Security Rod Monument with a 2-1/2" dia. domed survey cap and permanent magnet encased in a 6"dia. PVC pipe with a NGS style aluminum access cover.



*This document was prepared by DCI and GBC for use by Kossuth County, Iowa.*