

**Kossuth County, Iowa**  
Iowa North Zone (1401)  
Horiz. Datum: NAD83(1996)  
Vert. Datum: NAVD 1988  
US Survey Feet  
**2005**

Point Name: **576**

**Designation:** 2005-576 Kossuth Co GPS Control Point

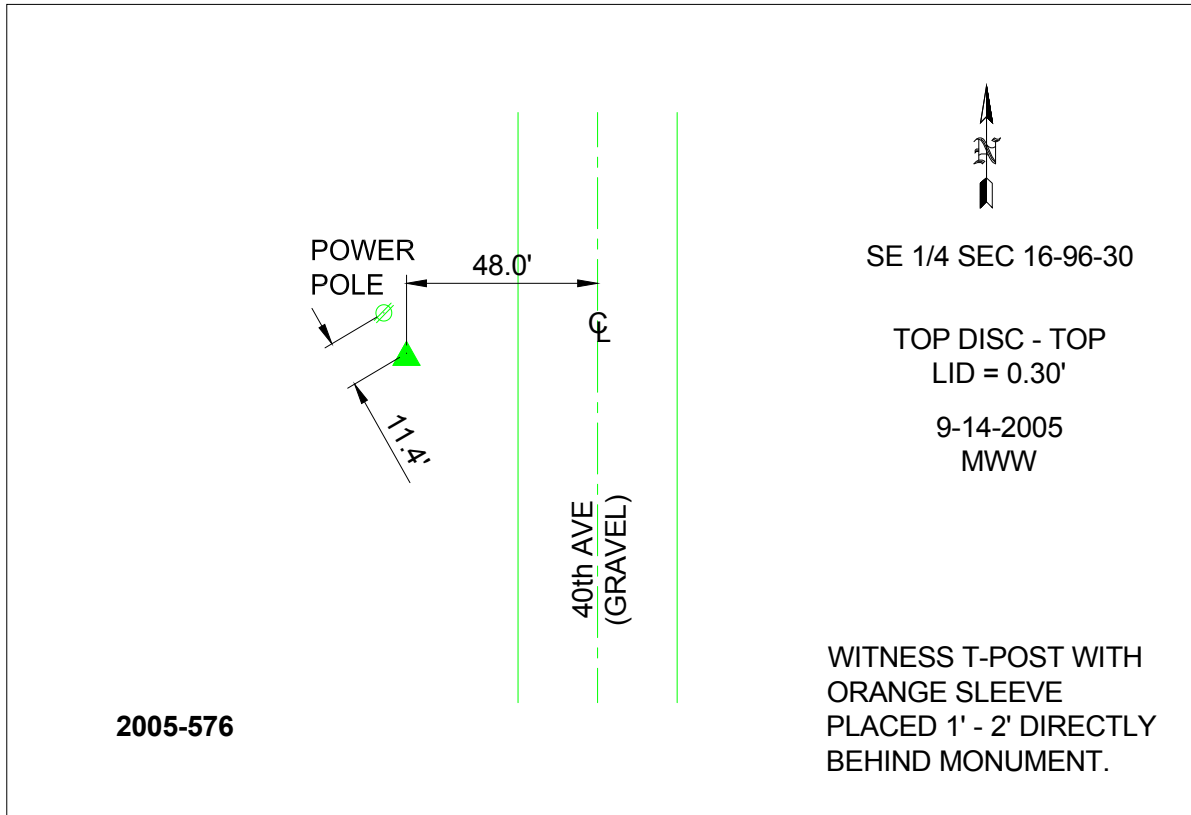
Northing: **3875540.20**sft Easting: **4685297.75**sft

Orthometric Height: **1234.63**sft Ellipsoid Height: **1140.63**sft **Geoid03**

Latitude: **43°07'42.55729"N** Longitude: **94°23'01.93411"W**

Mapping Angle: **-0°35'57"** Combination Scale Factor: **0.999923260**

**Monument Type:** Berntsen Top Security Rod Monument with a 2-1/2" dia. domed survey cap and permanent magnet encased in a 6"dia. PVC pipe with a NGS style aluminum access cover.



*This document was prepared by DCI and GBC for use by Kossuth County, Iowa.*