

**Kossuth County, Iowa**  
Iowa North Zone (1401)  
Horiz. Datum: NAD83(1996)  
Vert. Datum: NAVD 1988  
US Survey Feet  
**2005**

Point Name: **577**

**Designation:** 2005-577 Kossuth Co GPS Control Point

Northing: **3858921.68**sft Easting: **4685089.42**sft

Orthometric Height: **1250.77**sft Ellipsoid Height: **1156.60**sft **Geoid03**

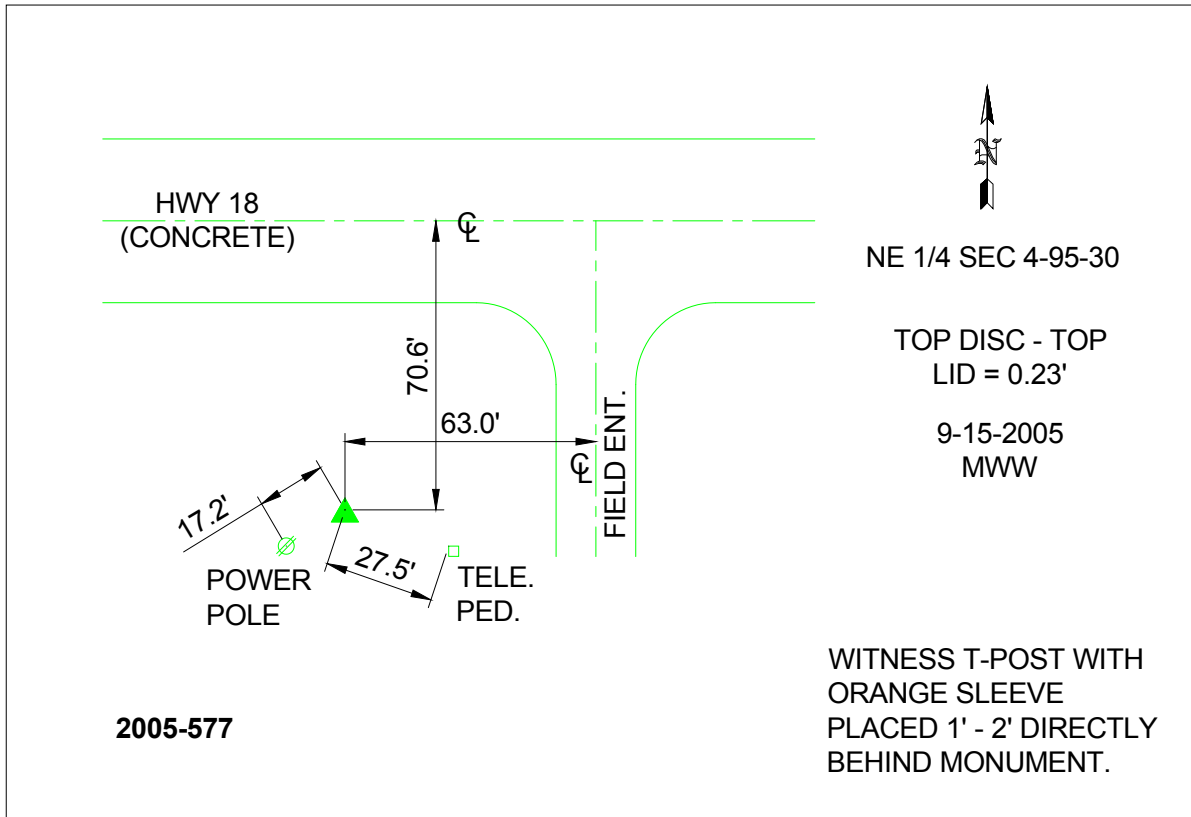
Latitude: **43°04'58.39966"N**

Longitude: **94°23'02.39994"W**

Mapping Angle: **-0°35'57"**

Combination Scale Factor: **0.999916410**

**Monument Type:** Berntsen Top Security Rod Monument with a 2-1/2" dia. domed survey cap and permanent magnet encased in a 6"dia. PVC pipe with a NGS style aluminum access cover.



*This document was prepared by DCI and GBC for use by Kossuth County, Iowa.*