

Kossuth County, Iowa
Iowa North Zone (1401)
Horiz. Datum: NAD83(1996)
Vert. Datum: NAVD 1988
US Survey Feet
2005

Point Name: **581**

Designation: 2005-581 Kossuth Co GPS Control Point

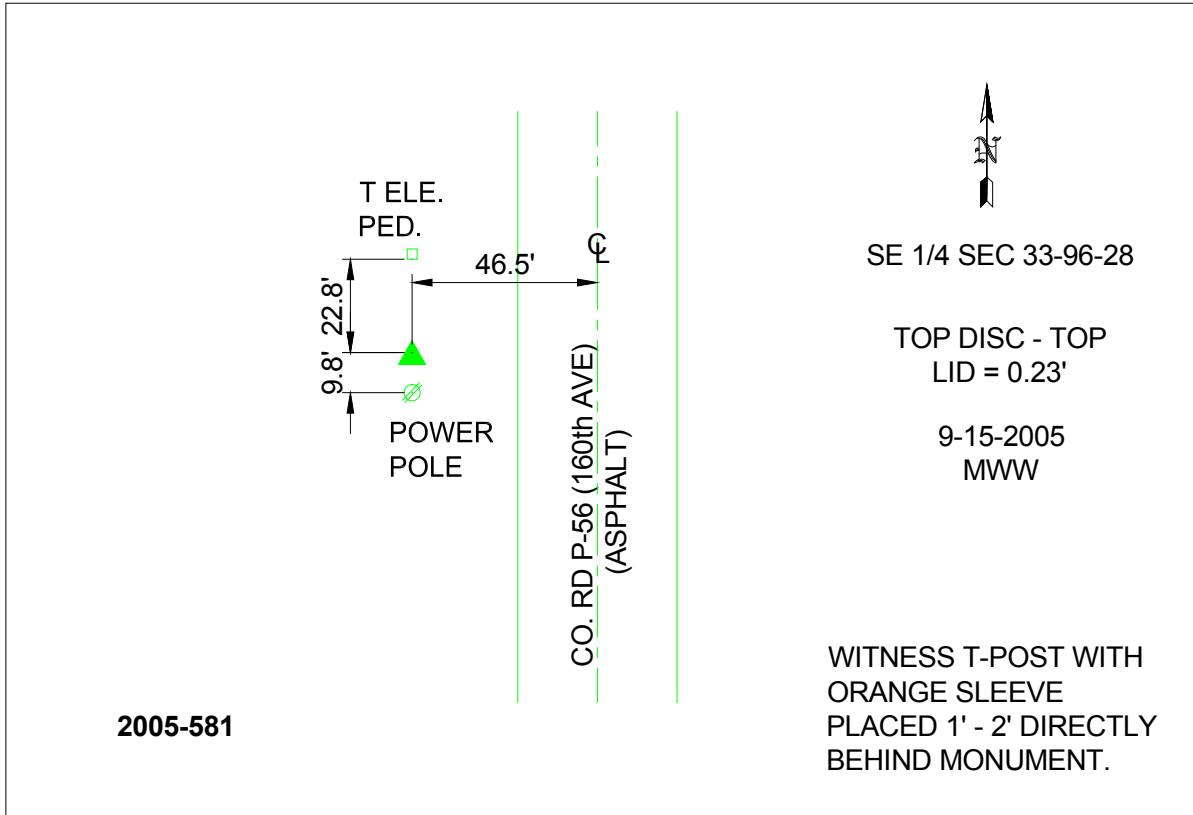
Northing: **3858474.65**sft Easting: **4748022.91**sft

Orthometric Height: **1192.09**sft Ellipsoid Height: **1096.84**sft **Geoid03**

Latitude: **43°04'59.61824"N** Longitude: **94°08'54.32795"W**

Mapping Angle: **-0°26'22"** Combination Scale Factor: **0.999919310**

Monument Type: Berntsen Top Security Rod Monument with a 2-1/2" dia. domed survey cap and permanent magnet encased in a 6"dia. PVC pipe with a NGS style aluminum access cover.



This document was prepared by DCI and GBC for use by Kossuth County, Iowa.