

**Kossuth County, Iowa**  
Iowa North Zone (1401)  
Horiz. Datum: NAD83(1996)  
Vert. Datum: NAVD 1988  
US Survey Feet  
**2005**

Point Name: **583**

**Designation:** 2005-583 Kossuth Co GPS Control Point

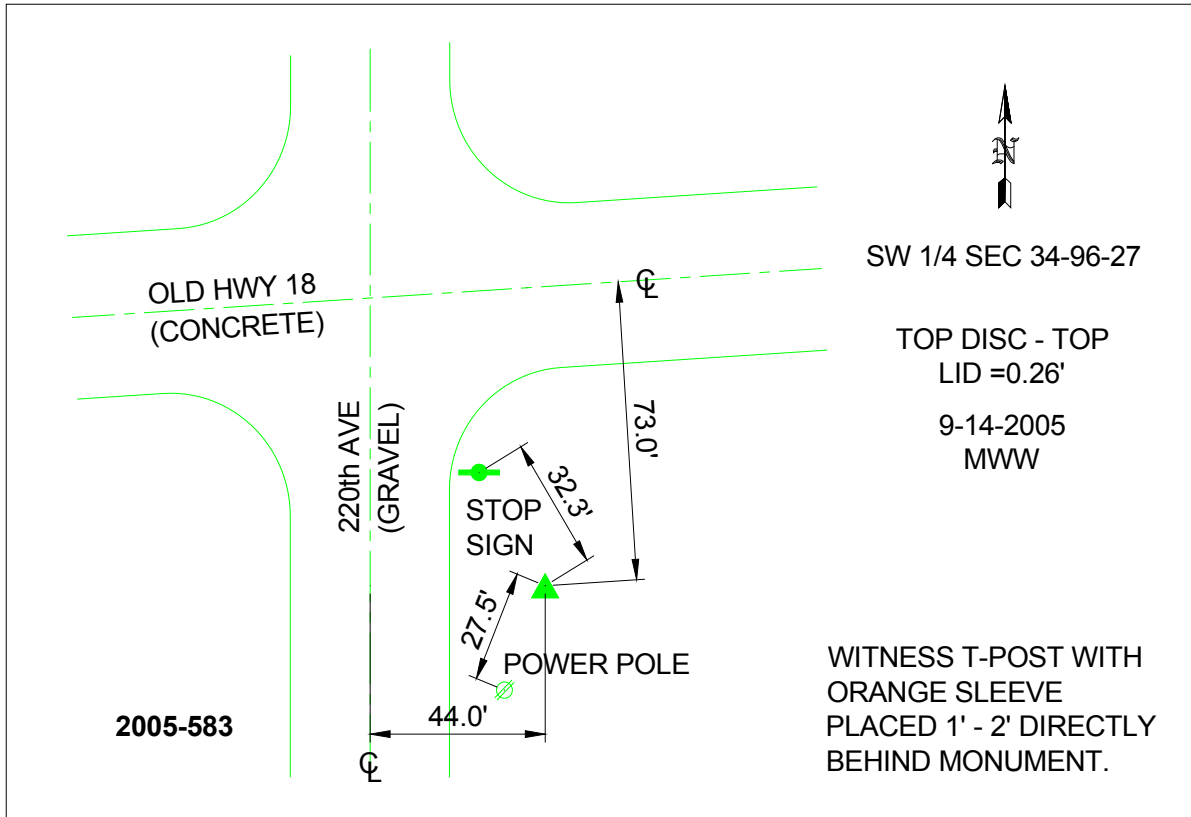
Northing: **3859068.66**sft Easting: **4779840.61**sft

Orthometric Height: **1194.72**sft Ellipsoid Height: **1098.96**sft **Geoid03**

Latitude: **43°05'07.67448"N** Longitude: **94°01'45.62997"W**

Mapping Angle: **-0°21'32"** Combination Scale Factor: **0.999919490**

**Monument Type:** Berntsen Top Security Rod Monument with a 2-1/2" dia. domed survey cap and permanent magnet encased in a 6"dia. PVC pipe with a NGS style aluminum access cover.



*This document was prepared by DCI and GBC for use by Kossuth County, Iowa.*