

**Kossuth County, Iowa**  
Iowa North Zone (1401)  
Horiz. Datum: NAD83(1996)  
Vert. Datum: NAVD 1988  
US Survey Feet  
**2005**

Point Name: **585**

**Designation:** 2005-585 Kossuth Co GPS Control Point

Northing: **3841828.17**sft Easting: **4763383.99**sft

Orthometric Height: **1241.53**sft Ellipsoid Height: **1145.80**sft **Geoid03**

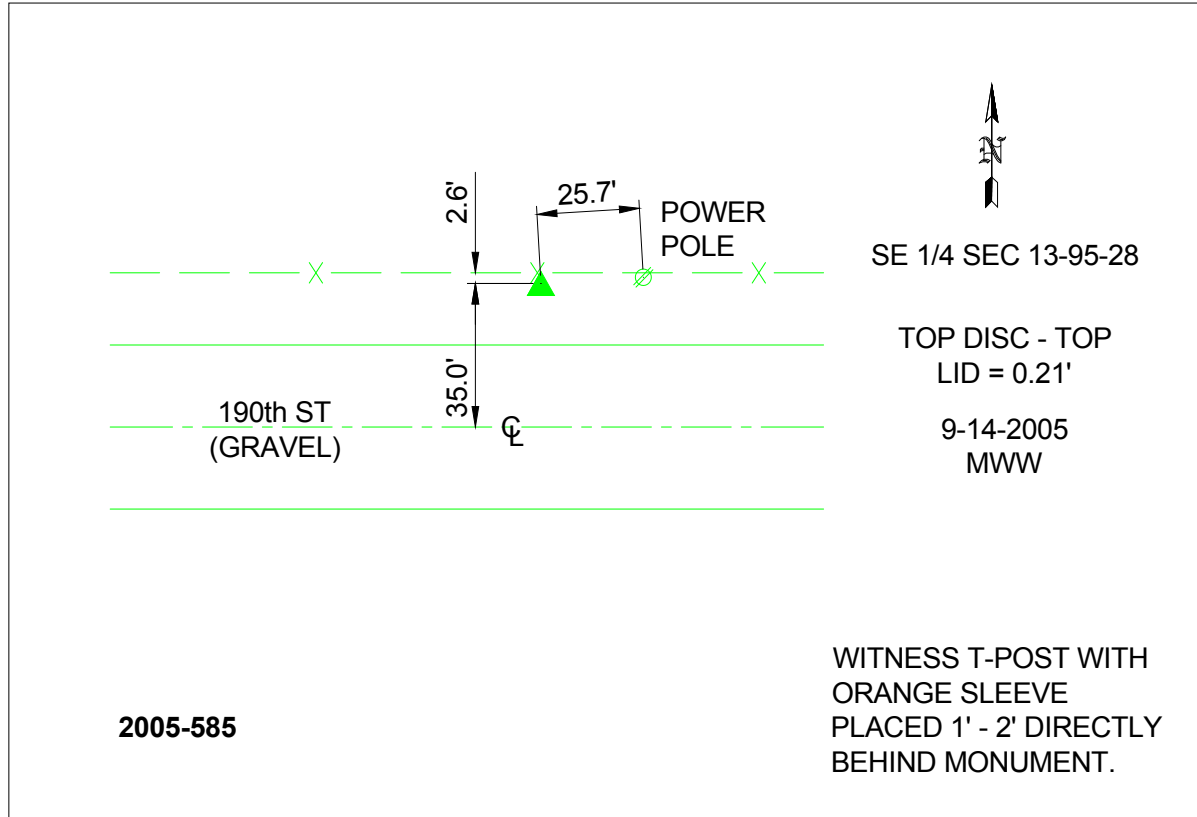
Latitude: **43°02'16.31090"N**

Longitude: **94°05'25.76945"W**

Mapping Angle: **-0°24'01"**

Combination Scale Factor: **0.999911540**

**Monument Type:** Berntsen Top Security Rod Monument with a 2-1/2" dia. domed survey cap and permanent magnet encased in a 6"dia. PVC pipe with a NGS style aluminum access cover.



*This document was prepared by DCI and GBC for use by Kossuth County, Iowa.*