

Kossuth County, Iowa
Iowa North Zone (1401)
Horiz. Datum: NAD83(1996)
Vert. Datum: NAVD 1988
US Survey Feet
2005

Point Name: **586**

Designation: 2005-586 Kossuth Co GPS Control Point

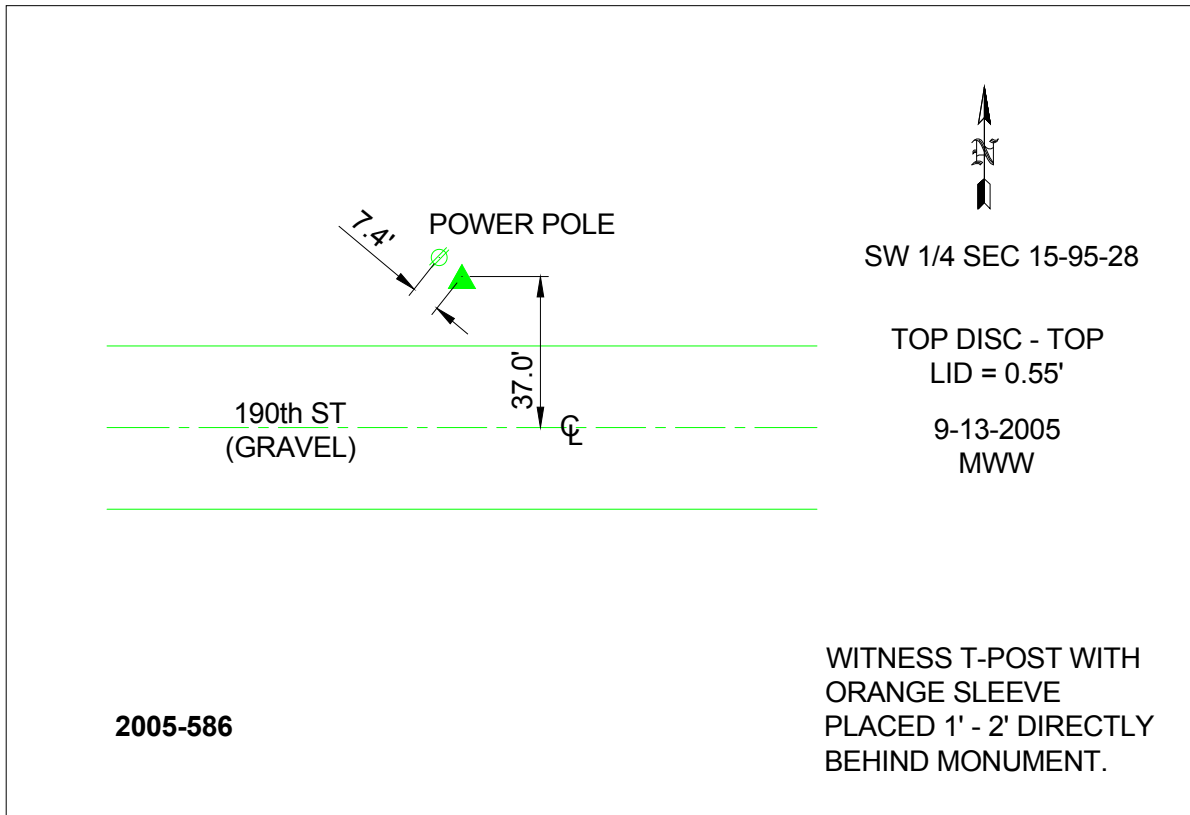
Northing: **3842096.13sft** Easting: **4748310.95sft**

Orthometric Height: **1261.70sft** Ellipsoid Height: **1166.20sft** **Geoid03**

Latitude: **43°02'17.86797"N** Longitude: **94°08'48.75782"W**

Mapping Angle: **-0°26'18"** Combination Scale Factor: **0.999910620**

Monument Type: Berntsen Top Security Rod Monument with a 2-1/2" dia. domed survey cap and permanent magnet encased in a 6"dia. PVC pipe with a NGS style aluminum access cover.



This document was prepared by DCI and GBC for use by Kossuth County, Iowa.