

Kossuth County, Iowa
Iowa North Zone (1401)
Horiz. Datum: NAD83(1996)
Vert. Datum: NAVD 1988
US Survey Feet
2005

Point Name: **587**

Designation: 2005-587 Kossuth Co GPS Control Point

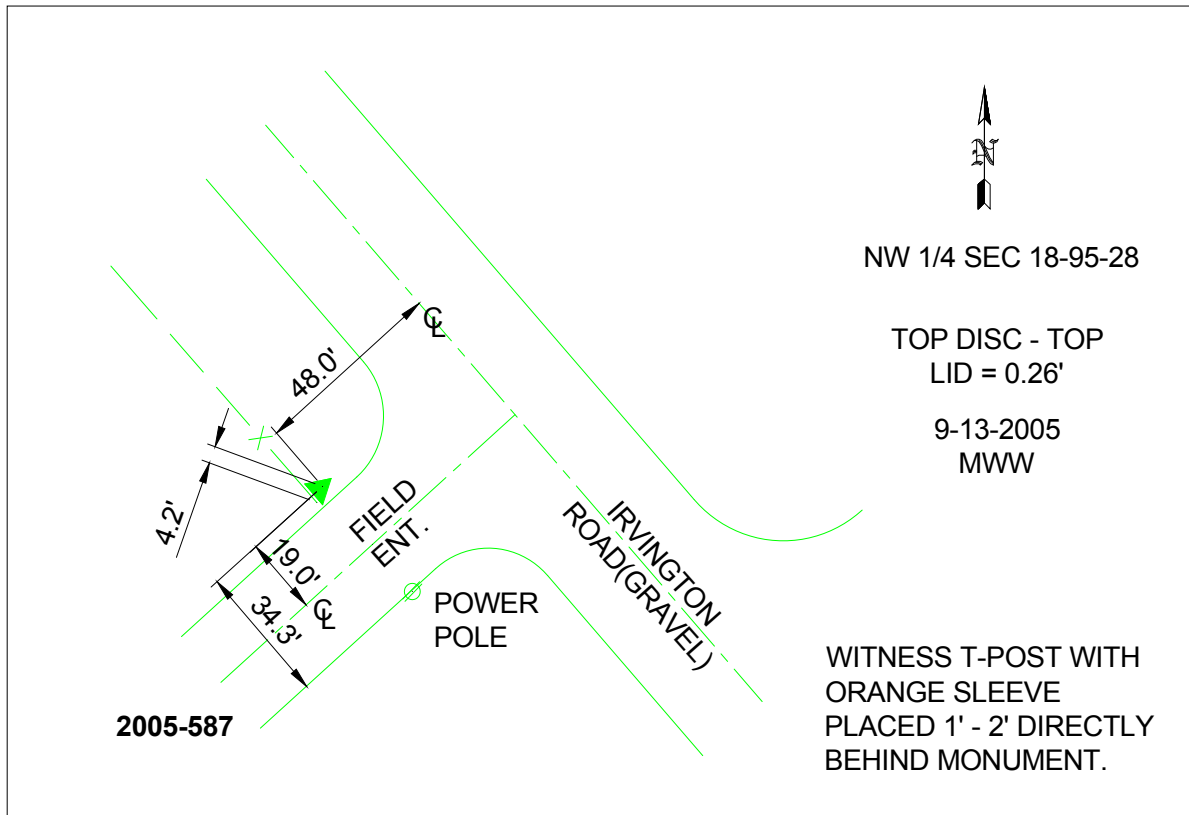
Northing: **3844762.58sft** Easting: **4733460.30sft**

Orthometric Height: **1206.32sft** Ellipsoid Height: **1111.13sft** **Geoid03**

Latitude: **43°02'43.03414"N** Longitude: **94°12'09.02287"W**

Mapping Angle: **-0°28'34"** Combination Scale Factor: **0.999914040**

Monument Type: Berntsen Top Security Rod Monument with a 2-1/2" dia. domed survey cap and permanent magnet encased in a 6"dia. PVC pipe with a NGS style aluminum access cover.



This document was prepared by DCI and GBC for use by Kossuth County, Iowa.