

Kossuth County, Iowa
Iowa North Zone (1401)
Horiz. Datum: NAD83(1996)
Vert. Datum: NAVD 1988
US Survey Feet
2005

Point Name: **588**

Designation: 2005-588 Kossuth Co GPS Control Point

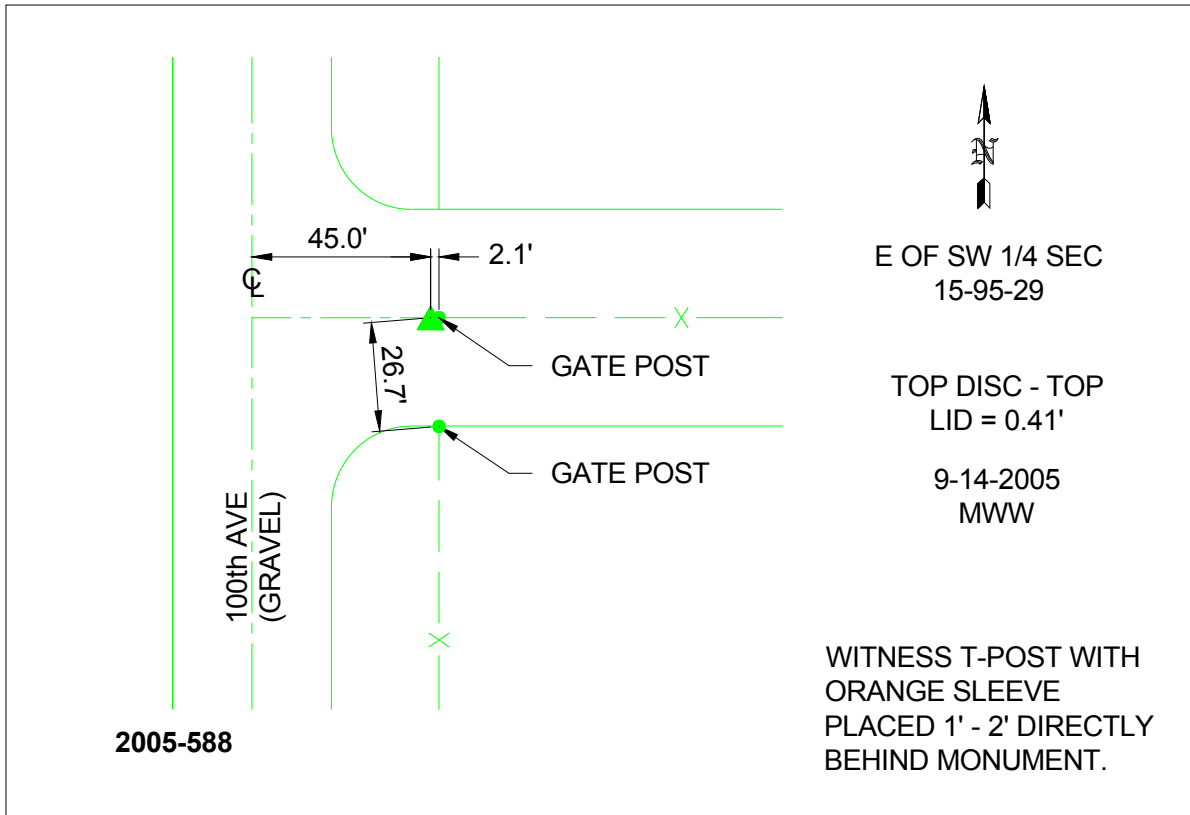
Northing: **3842359.69**sft Easting: **4716246.30**sft

Orthometric Height: **1254.61**sft Ellipsoid Height: **1159.71**sft **Geoid03**

Latitude: **43°02'17.82312"N** Longitude: **94°16'00.54355"W**

Mapping Angle: **-0°31'11"** Combination Scale Factor: **0.999910930**

Monument Type: Berntsen Top Security Rod Monument with a 2-1/2" dia. domed survey cap and permanent magnet encased in a 6"dia. PVC pipe with a NGS style aluminum access cover.



This document was prepared by DCI and GBC for use by Kossuth County, Iowa.