

Kossuth County, Iowa
Iowa North Zone (1401)
Horiz. Datum: NAD83(1996)
Vert. Datum: NAVD 1988
US Survey Feet
2005

Point Name: **589**

Designation: 2005-589 Kossuth Co GPS Control Point

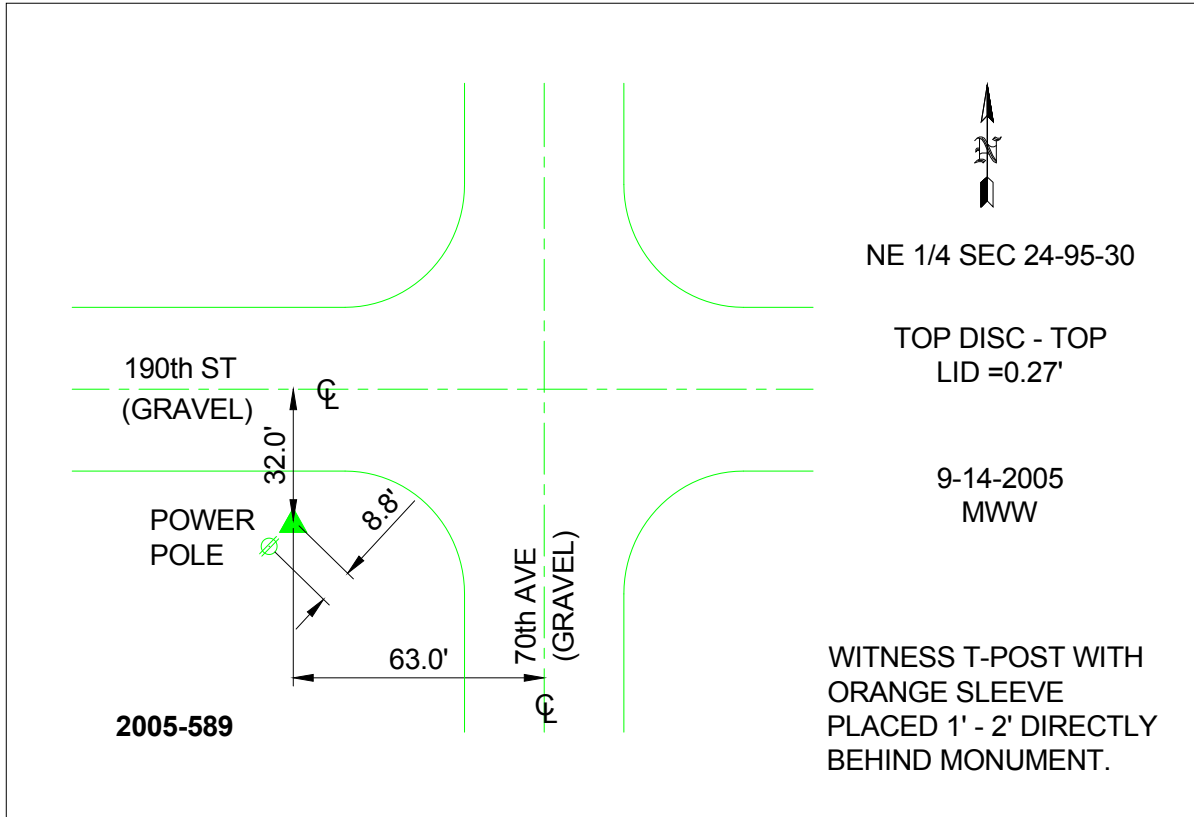
Northing: **3842526.07**sft Easting: **4700697.43**sft

Orthometric Height: **1171.95**sft Ellipsoid Height: **1077.31**sft **Geoid03**

Latitude: **43°02'18.02054"N** Longitude: **94°19'29.93082"W**

Mapping Angle: **-0°33'33"** Combination Scale Factor: **0.999914860**

Monument Type: Berntsen Top Security Rod Monument with a 2-1/2" dia. domed survey cap and permanent magnet encased in a 6"dia. PVC pipe with a NGS style aluminum access cover.



This document was prepared by DCI and GBC for use by Kossuth County, Iowa.