

Kossuth County, Iowa
Iowa North Zone (1401)
Horiz. Datum: NAD83(1996)
Vert. Datum: NAVD 1988
US Survey Feet
2005

Point Name: **592**

Designation: 2005-592 Kossuth Co GPS Control Point

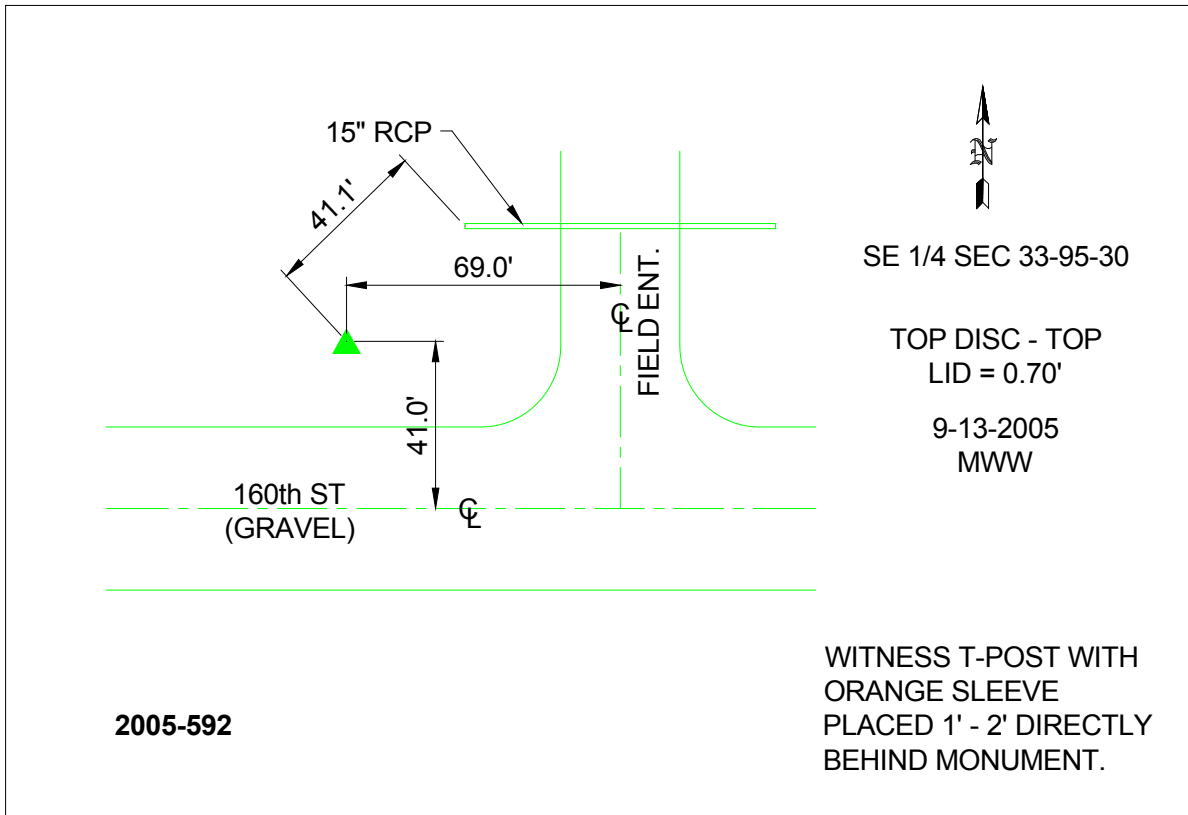
Northing: **3826999.06**sft Easting: **4683453.75**sft

Orthometric Height: **1157.58**sft Ellipsoid Height: **1062.97**sft **Geoid03**

Latitude: **42°59'42.93392"N** Longitude: **94°23'19.91706"W**

Mapping Angle: **-0°36'09"** Combination Scale Factor: **0.999910970**

Monument Type: Berntsen Top Security Rod Monument with a 2-1/2" dia. domed survey cap and permanent magnet encased in a 6"dia. PVC pipe with a NGS style aluminum access cover.



This document was prepared by DCI and GBC for use by Kossuth County, Iowa.