

Kossuth County, Iowa
Iowa North Zone (1401)
Horiz. Datum: NAD83(1996)
Vert. Datum: NAVD 1988
US Survey Feet
2005

Point Name: **598**

Designation: 2005-598 Kossuth Co GPS Control Point

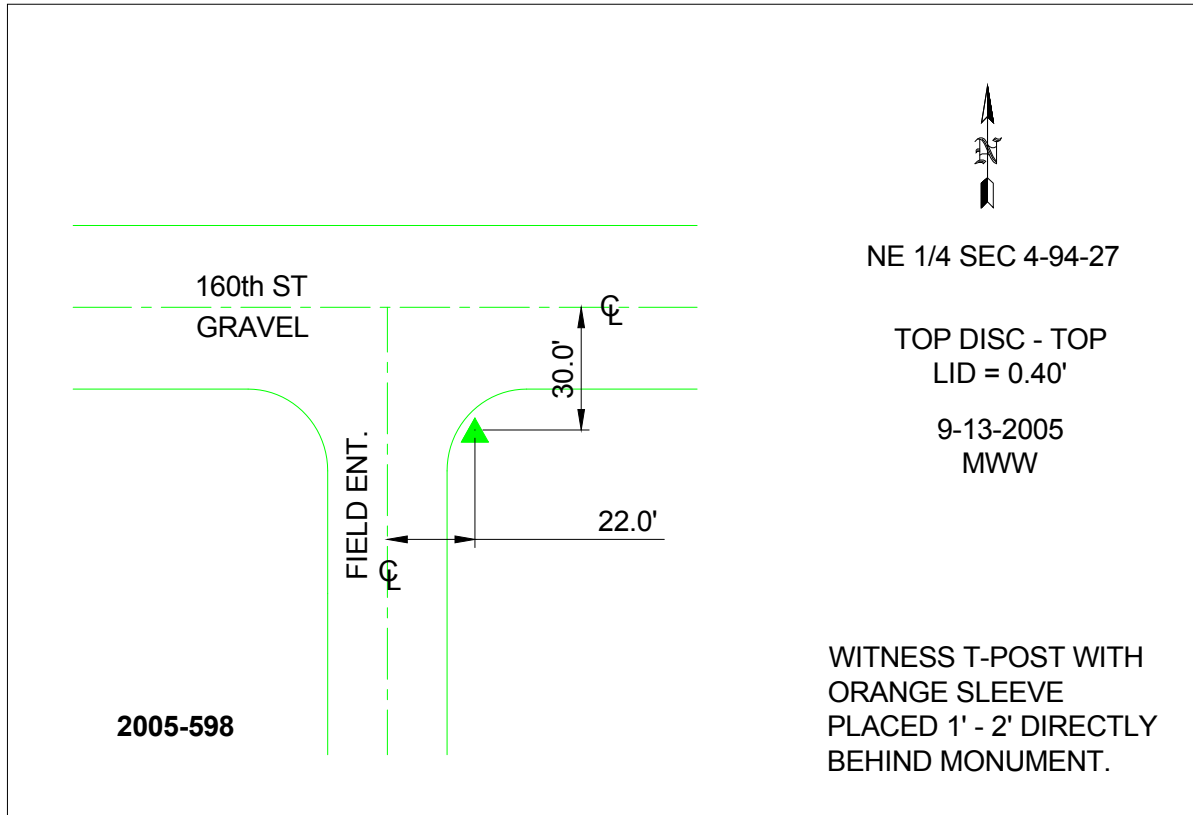
Northing: **3825825.52sft** Easting: **4778130.70sft**

Orthometric Height: **1163.04sft** Ellipsoid Height: **1066.97sft** **Geoid03**

Latitude: **42°59'39.21772"N** Longitude: **94°02'05.83739"W**

Mapping Angle: **-0°21'45"** Combination Scale Factor: **0.999910680**

Monument Type: Berntsen Top Security Rod Monument with a 2-1/2" dia. domed survey cap and permanent magnet encased in a 6"dia. PVC pipe with a NGS style aluminum access cover.



This document was prepared by DCI and GBC for use by Kossuth County, Iowa.