

Kossuth County, Iowa
Iowa North Zone (1401)
Horiz. Datum: NAD83(1996)
Vert. Datum: NAVD 1988
US Survey Feet
2005

Point Name: **602**

Designation: 2005-602 Kossuth Co GPS Control Point

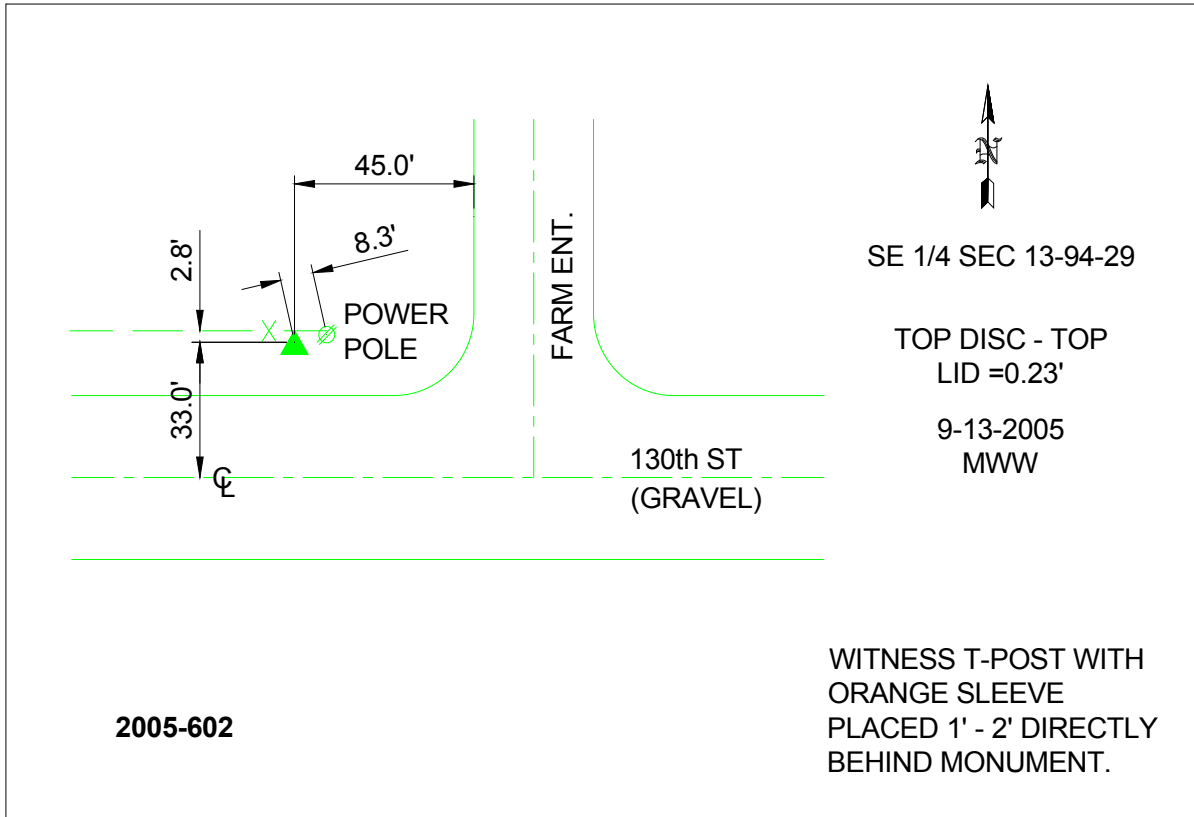
Northing: **3810645.59**sft Easting: **4731388.05**sft

Orthometric Height: **1148.48**sft Ellipsoid Height: **1052.77**sft **Geoid03**

Latitude: **42°57'05.88274"N** Longitude: **94°12'33.07490"W**

Mapping Angle: **-0°28'50"** Combination Scale Factor: **0.999907400**

Monument Type: Berntsen Top Security Rod Monument with a 2-1/2" dia. domed survey cap and permanent magnet encased in a 6"dia. PVC pipe with a NGS style aluminum access cover.



This document was prepared by DCI and GBC for use by Kossuth County, Iowa.