

Kossuth County, Iowa
Iowa North Zone (1401)
Horiz. Datum: NAD83(1996)
Vert. Datum: NAVD 1988
US Survey Feet
2005

Point Name: **603**

Designation: 2005-603 Kossuth Co GPS Control Point

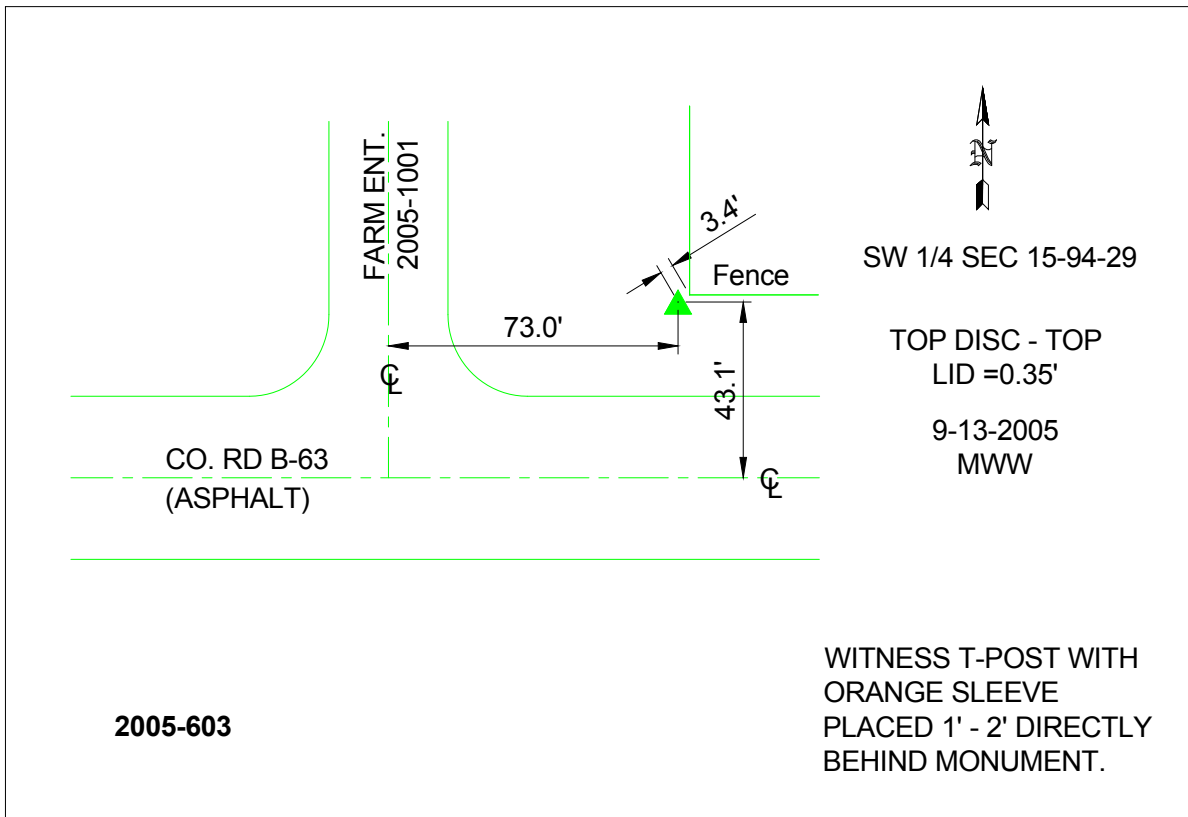
Northing: **3810778.96**sft Easting: **4716239.29**sft

Orthometric Height: **1154.04**sft Ellipsoid Height: **1058.61**sft **Geoid03**

Latitude: **42°57'05.89469"N** Longitude: **94°15'56.78590"W**

Mapping Angle: **-0°31'08"** Combination Scale Factor: **0.999907120**

Monument Type: Berntsen Top Security Rod Monument with a 2-1/2" dia. domed survey cap and permanent magnet encased in a 6"dia. PVC pipe with a NGS style aluminum access cover.



This document was prepared by DCI and GBC for use by Kossuth County, Iowa.